



BPA Wildfire Mitigation Program Updates

Public Briefing

April 17, 2025



Welcome and introductions

BPA staff

- Richard Bustamante, Vice President, Transmission System Operations
- Kelly Miller, Wildfire Mitigation Program

Agenda

- Wildfire landscape
- Progress since 2022 update
- Wildfire Mitigation Program
- Public Safety Power Shutoff (PSPS)
- 2025 wildfire outlook

Wildfire landscape

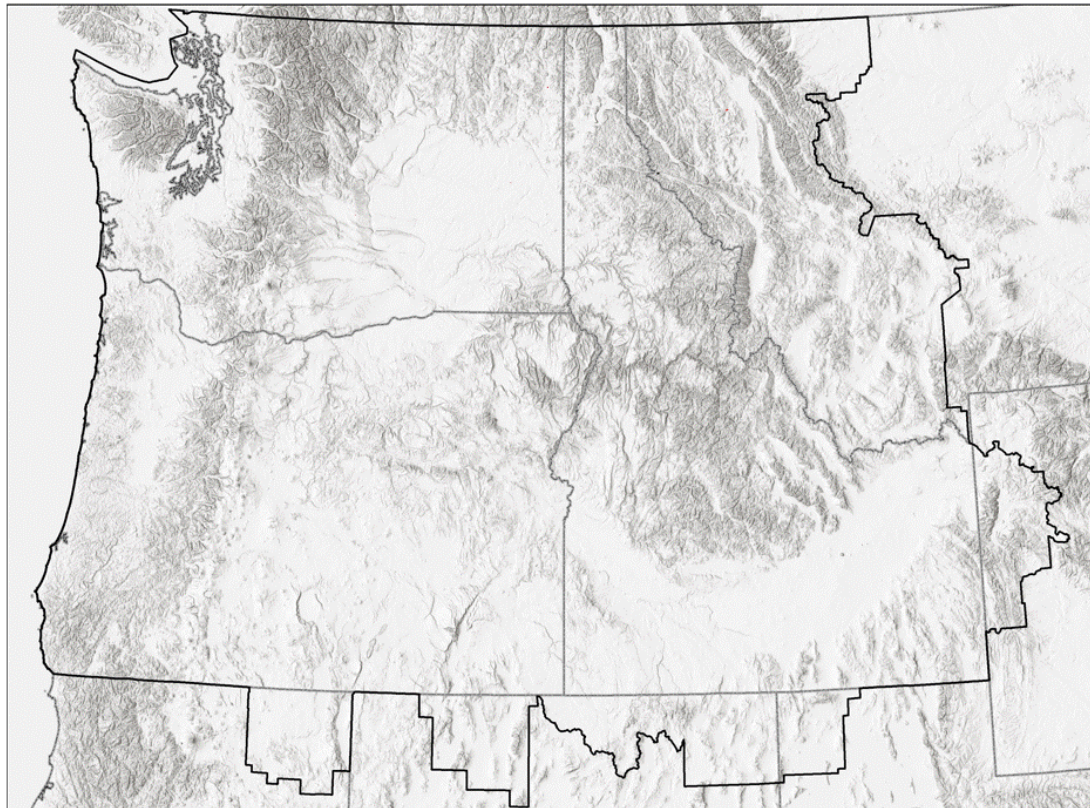
FY24 wildfire season

2024 Summary

	2024	2023	10-yr avg (2014-2023)
Total fires	1,206	937	397
<100 acres	72%	75%	25%
≥100 acres	14%	17%	46%
≥1,000 acres	10%	6%	22%
≥10,000 acres	4%	2%	7%
Total acres	3,244,069	623,239	1,167,781

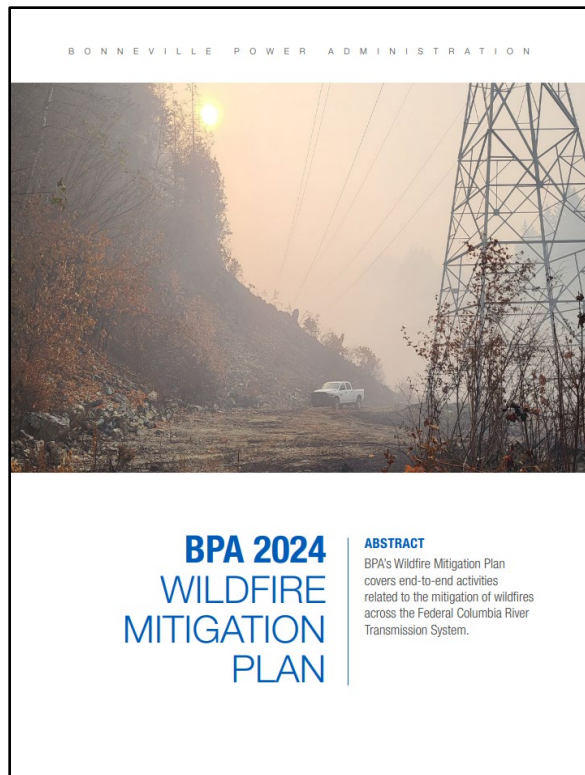
2024 burns (as of Oct. 1) in the BPA service territory represent **40.8%** of the national total burn area

March 2024



Progress since 2022

Areas of progress



- 2024 Wildfire Mitigation Plan
- Public Safety Power Shutoff (PSPS) plan
- Wildfire modeling
- Data integration
- Design standards
- Engagement
- Communication
- Technology research

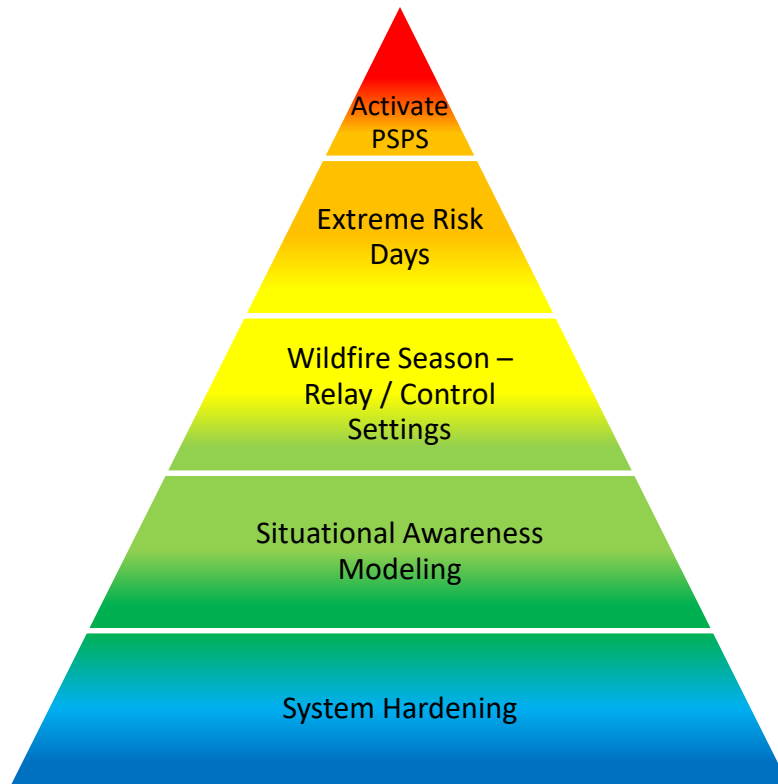
Wildfire Mitigation Program

Risks to transmission utilities

- Structure materials
- Arcing due to smoke, ash, heat
- Vegetation
- Environmental conditions (wind, weather)



Wildfire Mitigation Hierarchy



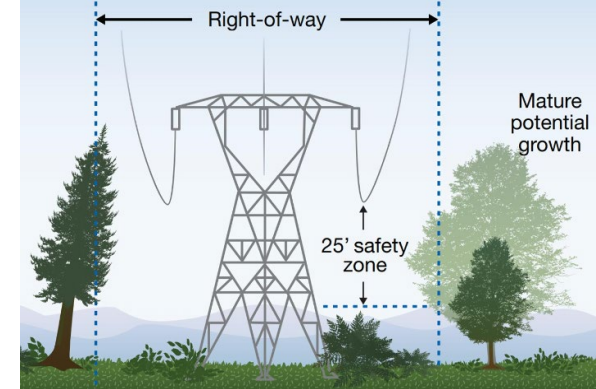
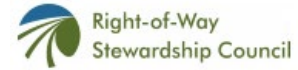
System hardening



- Regular asset inspections and maintenance
 - All lines patrolled annually
 - Additional detailed inspections performed at differing recurrences
 - Inspections may lead to maintenance

System hardening

- Vegetation management
 - Integrated vegetation management
 - Right-of-Way Stewardship Council accreditation
 - Regular patrols and maintenance
 - ROWs can act as fire breaks

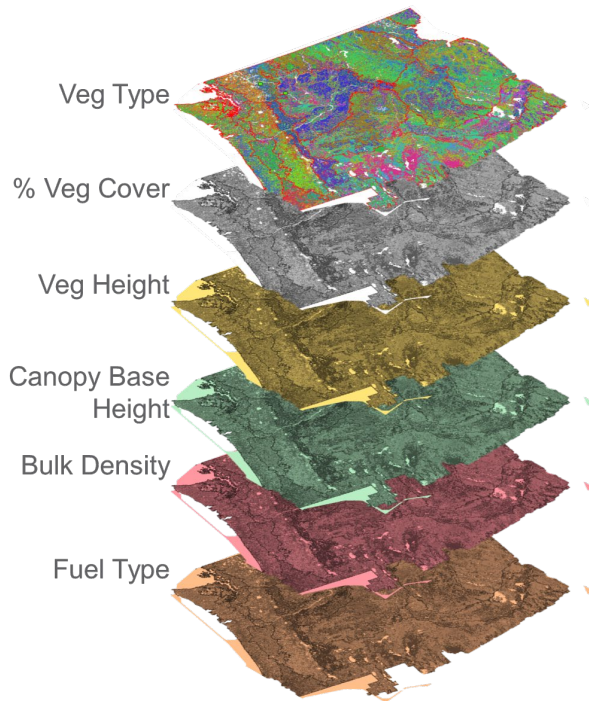


System hardening

- Upgrades to infrastructure
 - Industry standard adoption
 - Additional design and construction standards



Situational awareness



Fuelscape modeling

- Weather forecasting and monitoring
- 4th consecutive year of wildfire risk modeling with PNNL

Operational settings



- Operation system controls
- Wildfire conservative operations settings
 - Restricted manual testing
 - Reclosing cut out and no manual test
- Coordinate wildfire mitigations with adjacent utilities

Public Safety Power Shutoff (PSPS)

- Last line of defense to mitigate potential utility caused wildfire ignitions or conflagrations



Public Safety Power Shutoff (PSPS)

Transmission Line De-energizations

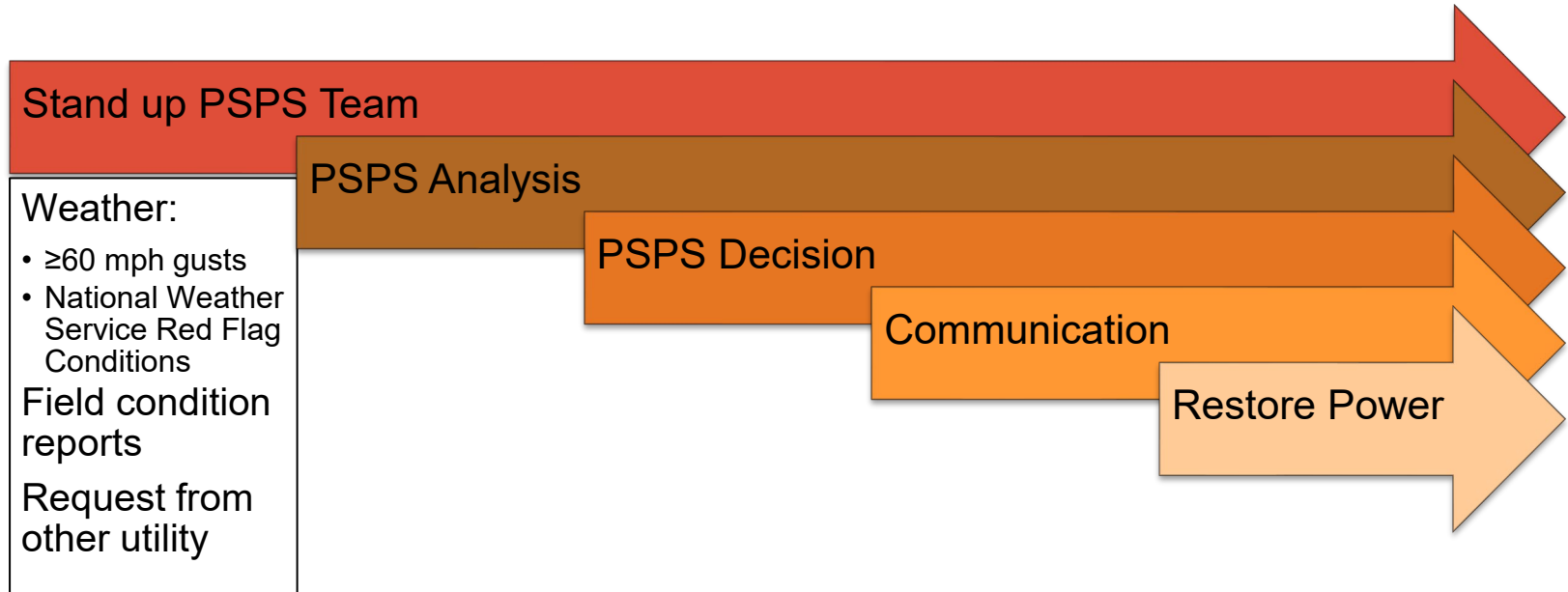
Scenario 1 Existing wildfires cause facilities to trip out of service due to smoke or wildfire damage

Scenario 2 BPA proactively de-energizes lines or facilities for first responder safety and wildfire fighting efforts.

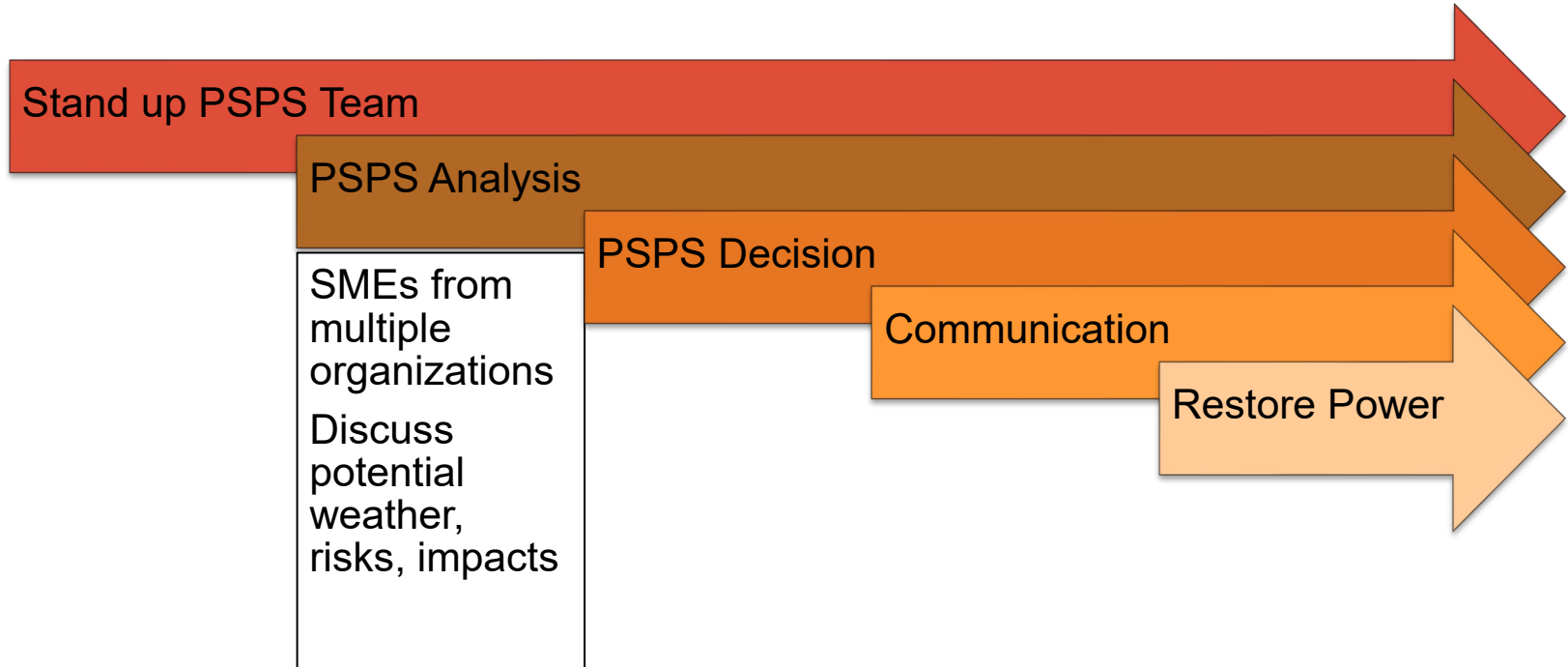
Scenario 3 BPA proactively de-energizes transmission lines to prevent igniting a wildfire.



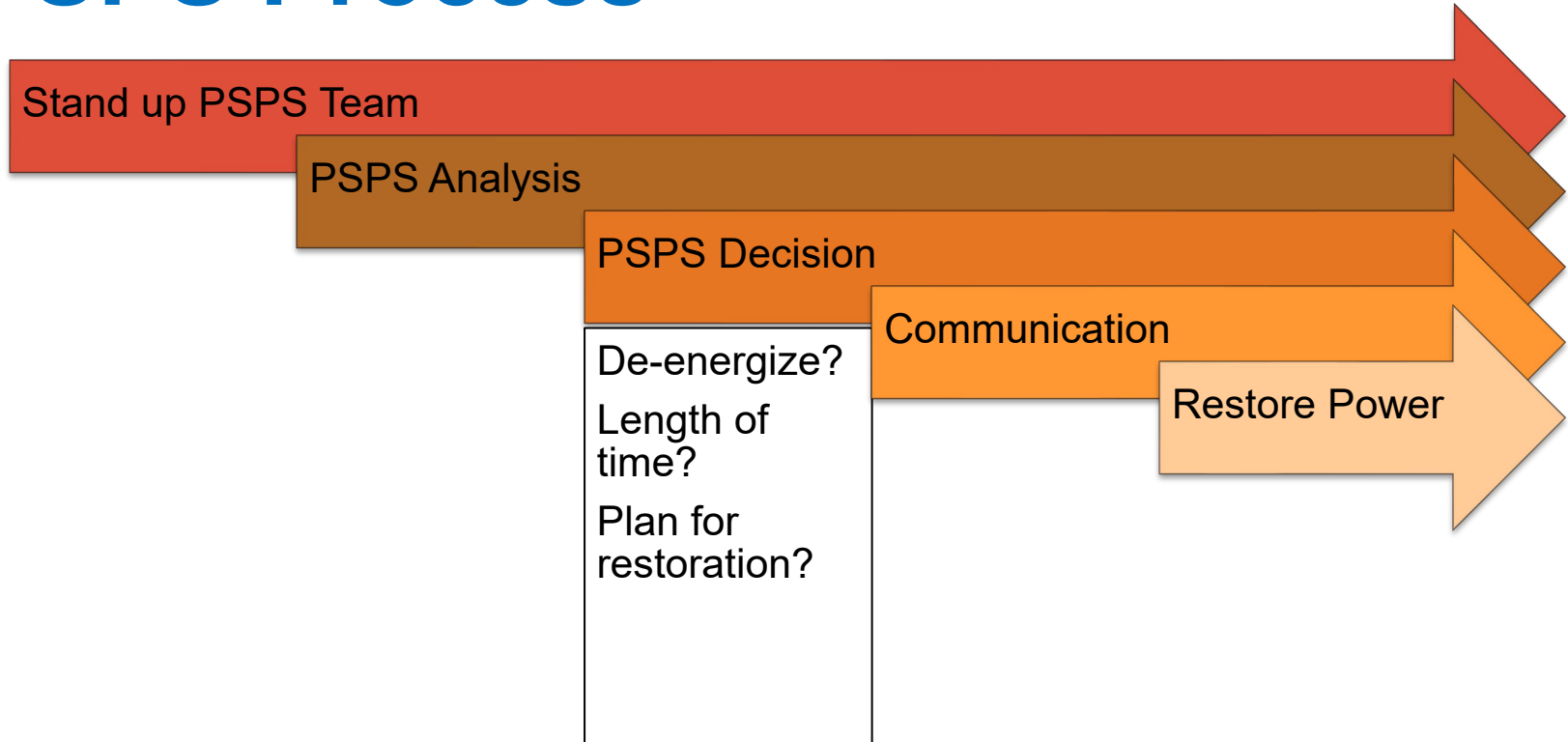
PSPS Process



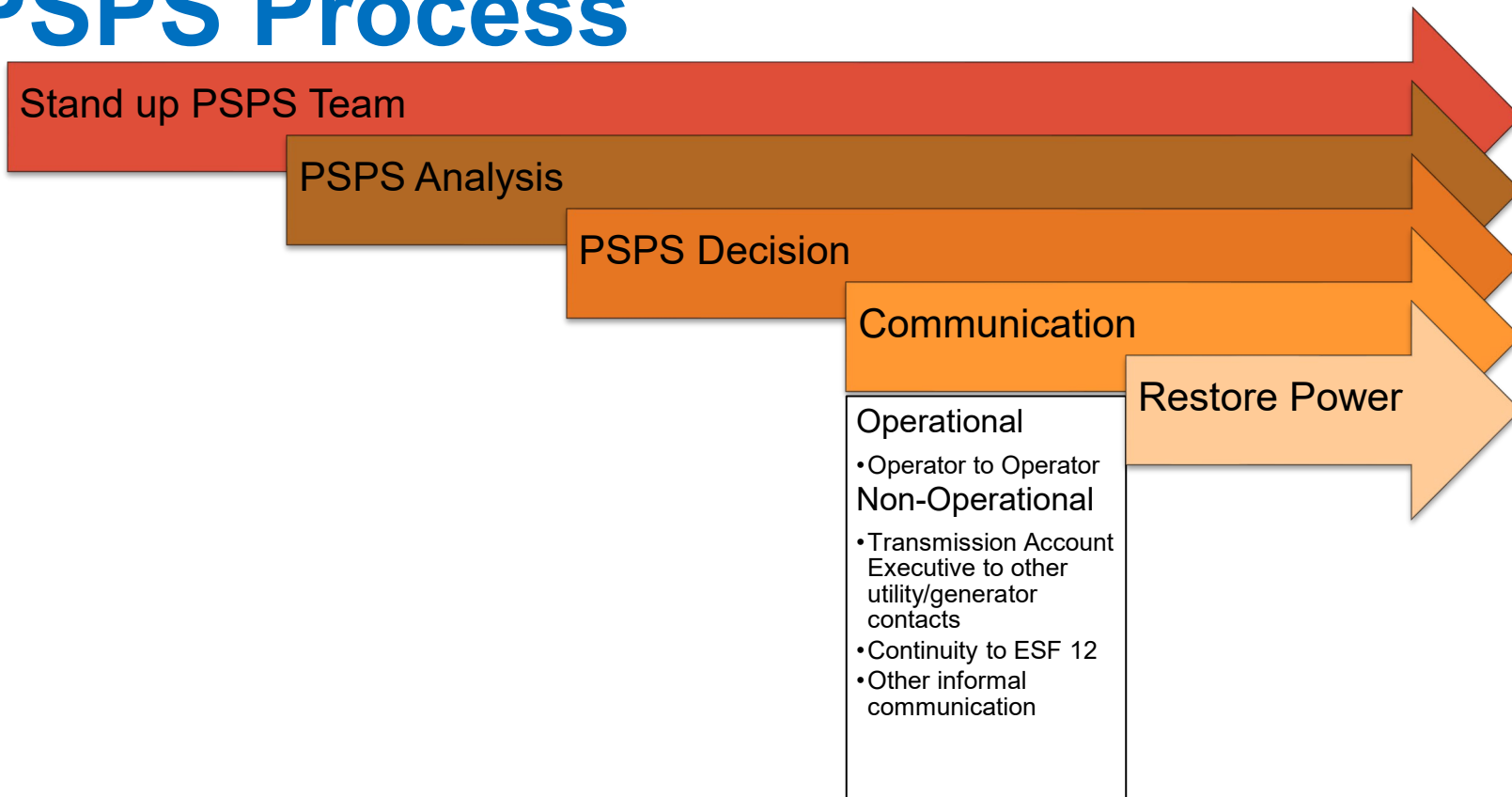
PSPS Process



PSPS Process



PSPS Process



PSPS Process

Stand up PSPS Team

PSPS Analysis

PSPS Decision

Communication

Restore Power

Weather all
clear
Damage
assessments
Repairs, if
needed

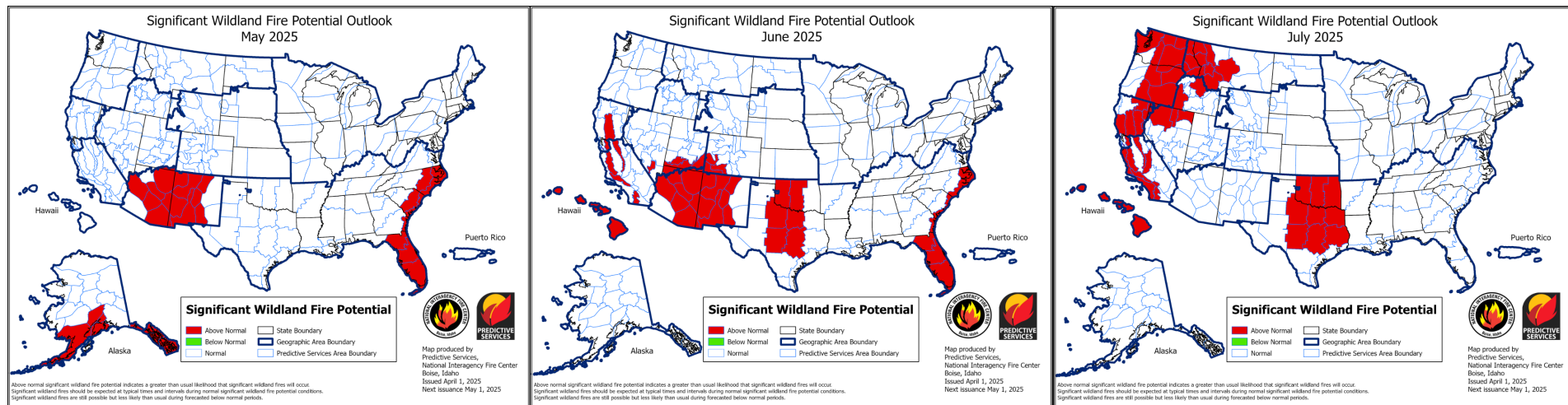
PSPS events



Year	# PSPS events	# line de-energizations	Load/generation impacts
2021	2	1	Yes
2022	2	3	No
2023	0	0	No
2024	4	5	Yes

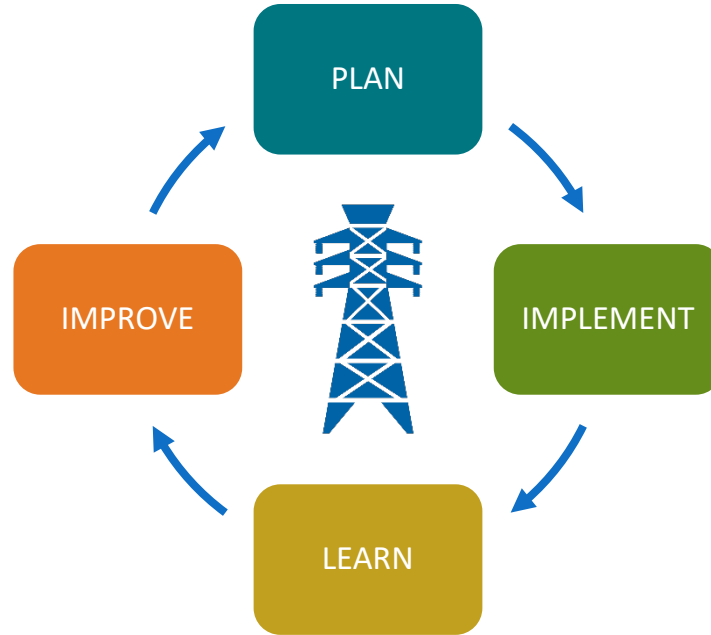
2025 summer outlook

NIFC outlook



Path forward

Continual improvement



Closing remarks

To Learn More

Kelly Miller, Wildfire Mitigation Program Manager

klmiller@bpa.gov