



Transmission Use Update

9/20/2022

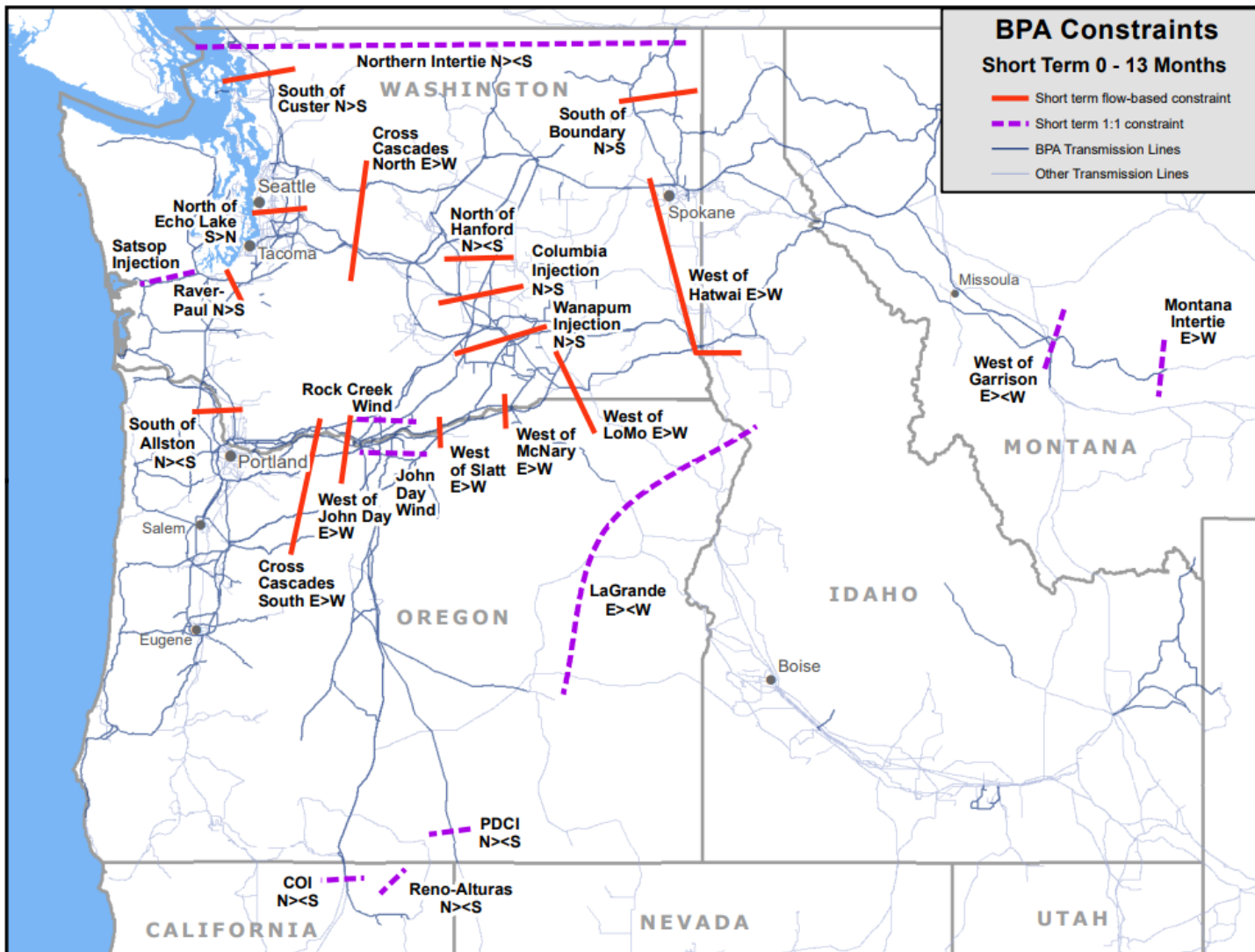


Objective

BPA is providing the following Transmission Usage Data:

- Congestion data from the previous 4 months (May – August)
- Flows on North of Echo Lake (NOEL) and South of Allston (SOA)
- Deep Dive on Raver-Paul event

ATC Short-Term Constraints

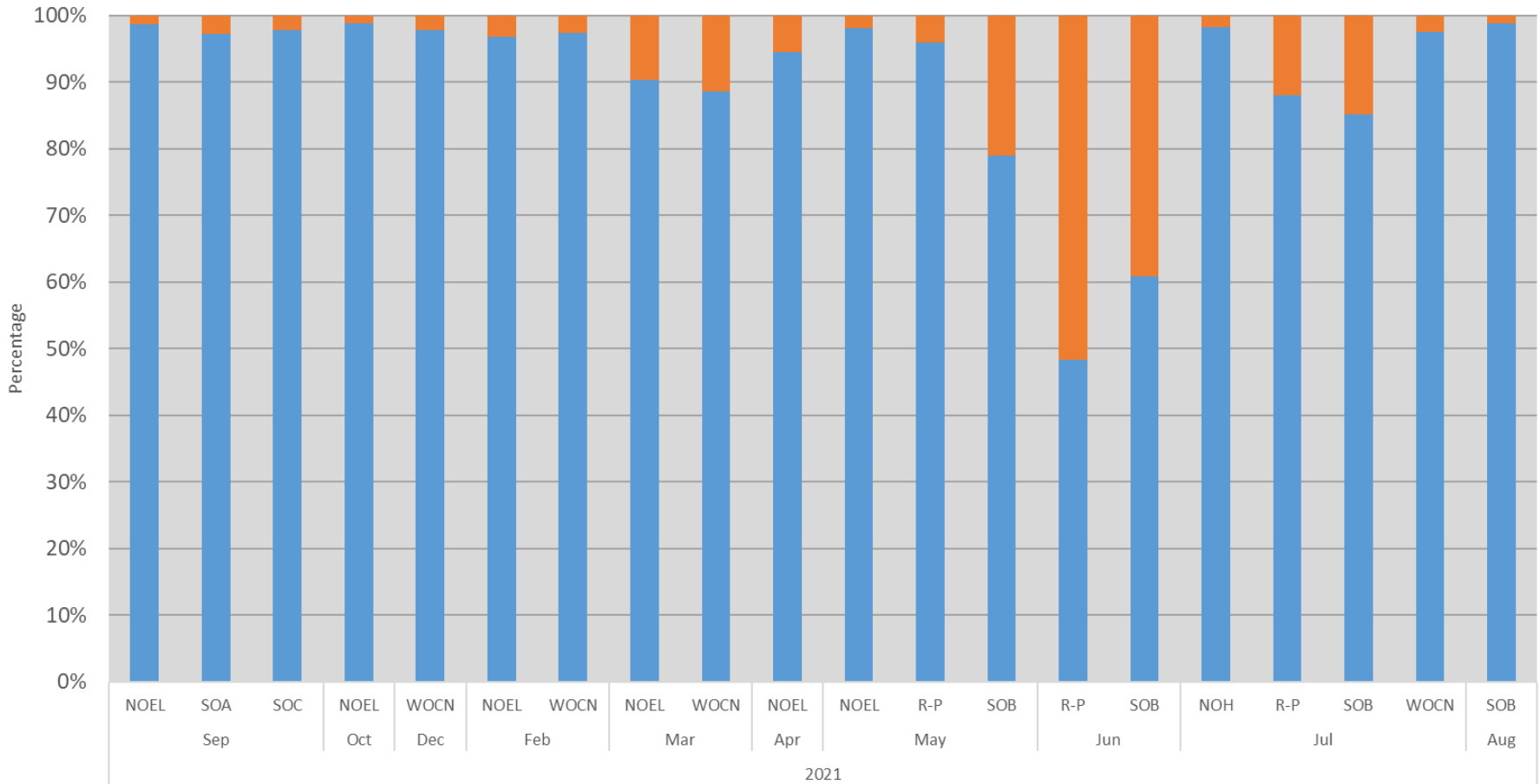


TTC and Curtailments

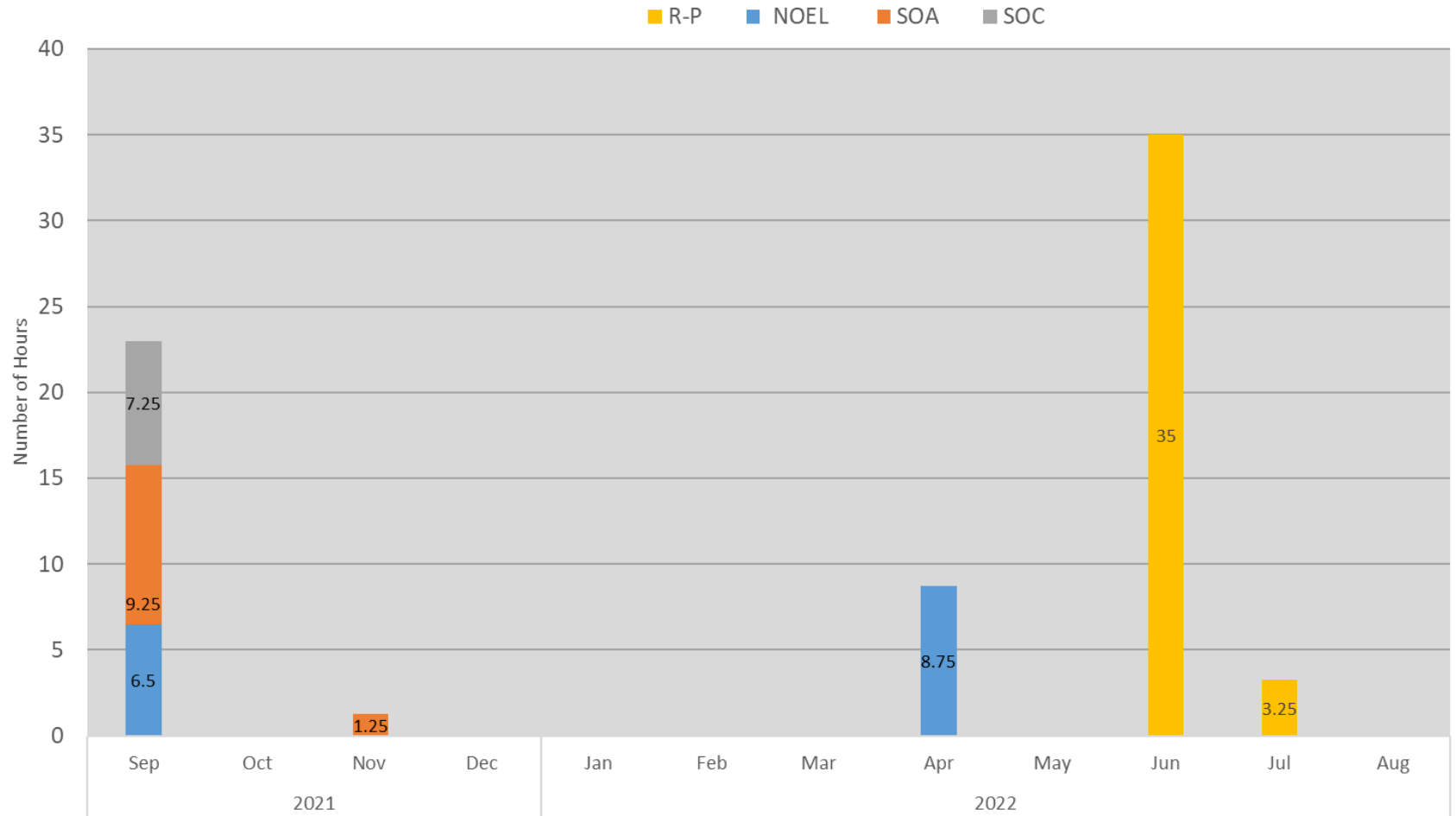
- The Total Transfer Capability (TTC) is used for limiting commercial sales and can be an indicator of potential congestion, but dispatcher action is not required based on TTC alone.
- Dispatcher action is driven by the contingency studies run by the real-time study engineer. Action is only required if those studies indicate that a Facility Rating would be exceeded if certain contingencies were to occur.
- In the update period, there was just 1 day in which real-time operations utilized curtailment on one of BPA's internal flow-based paths to mitigate facility ratings violations.

Actual Flows Within 20% of Dynamic TTC

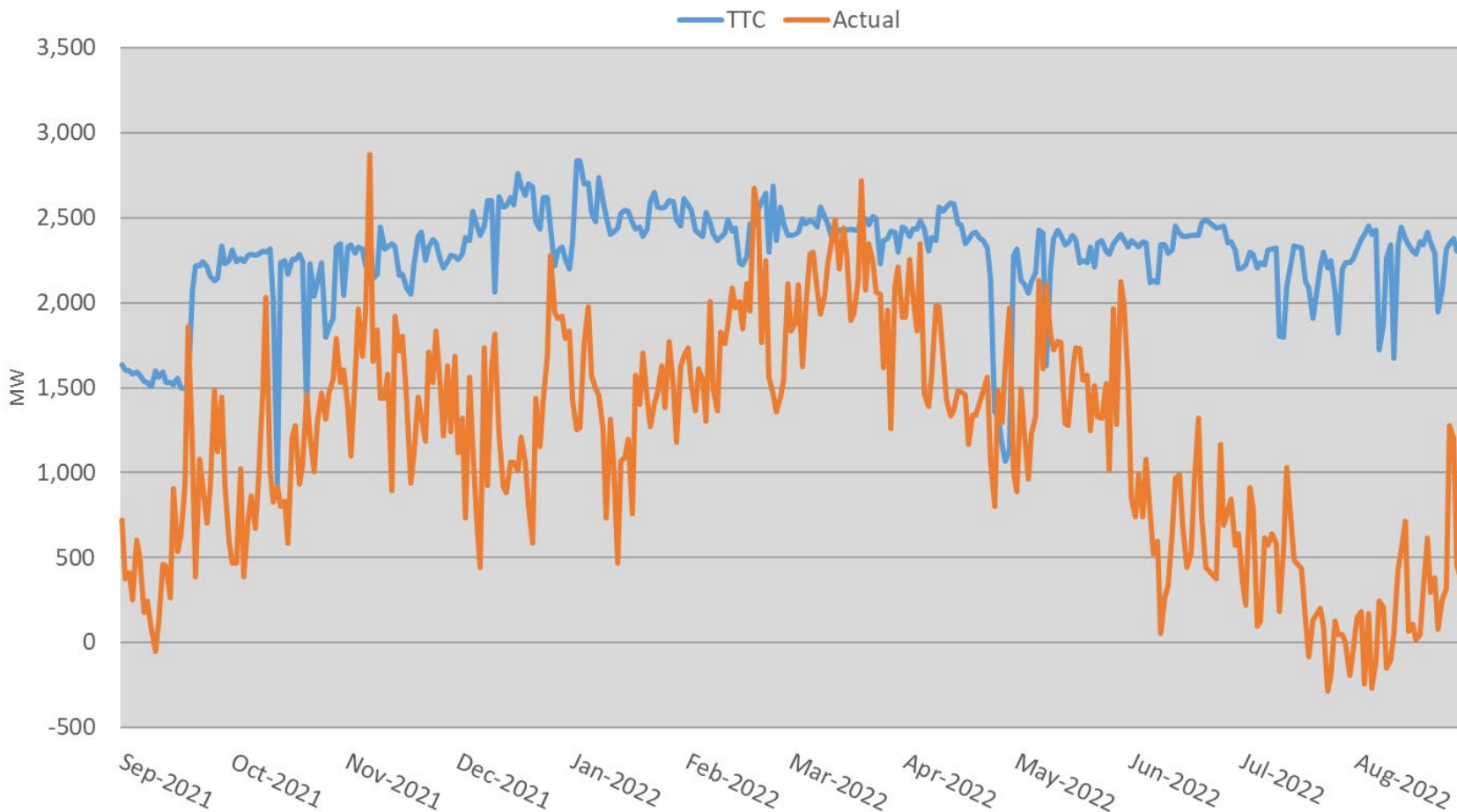
■ Percent Below 20% ■ Percent Within 20%



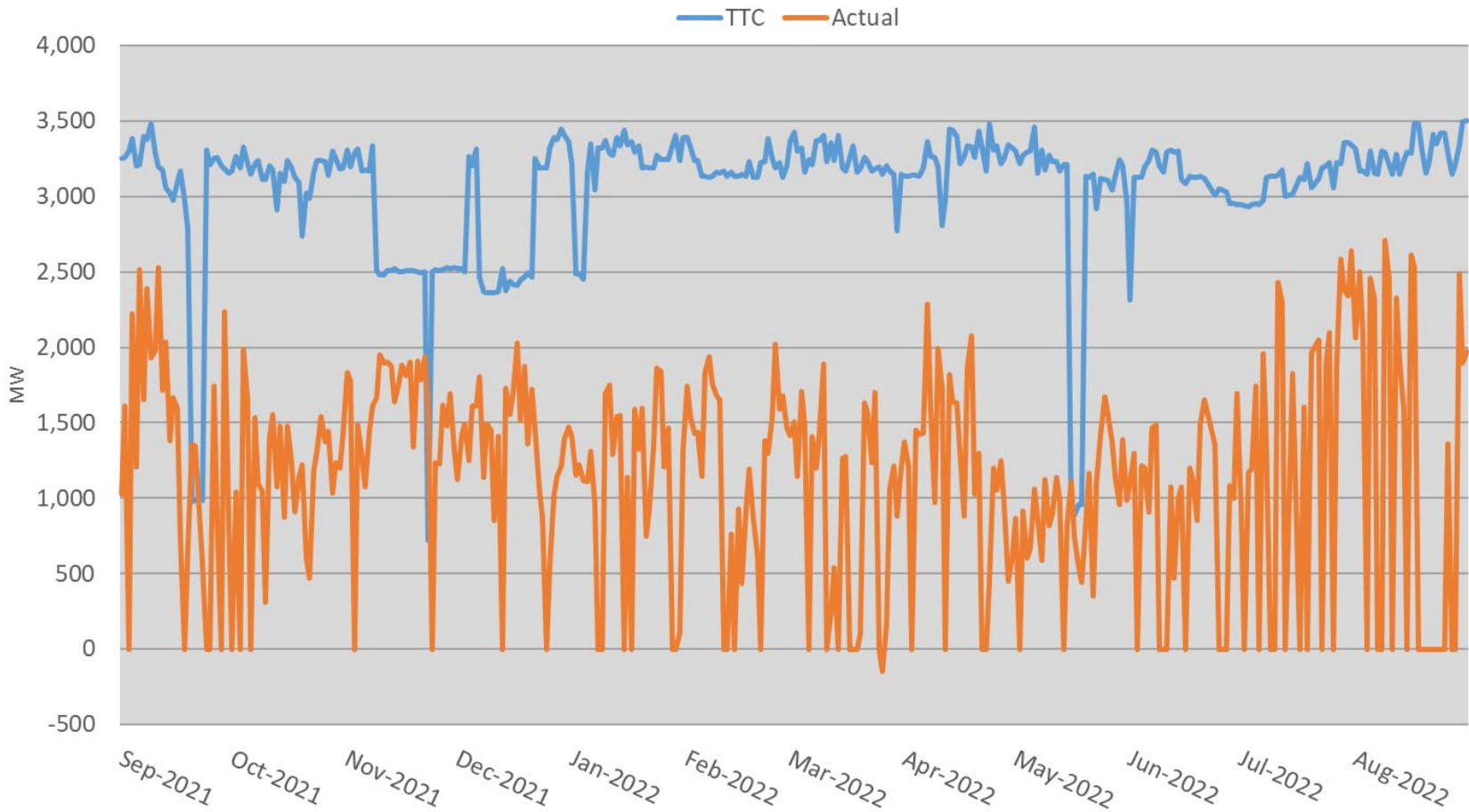
Hours When Flow => 100% Dynamic TTC



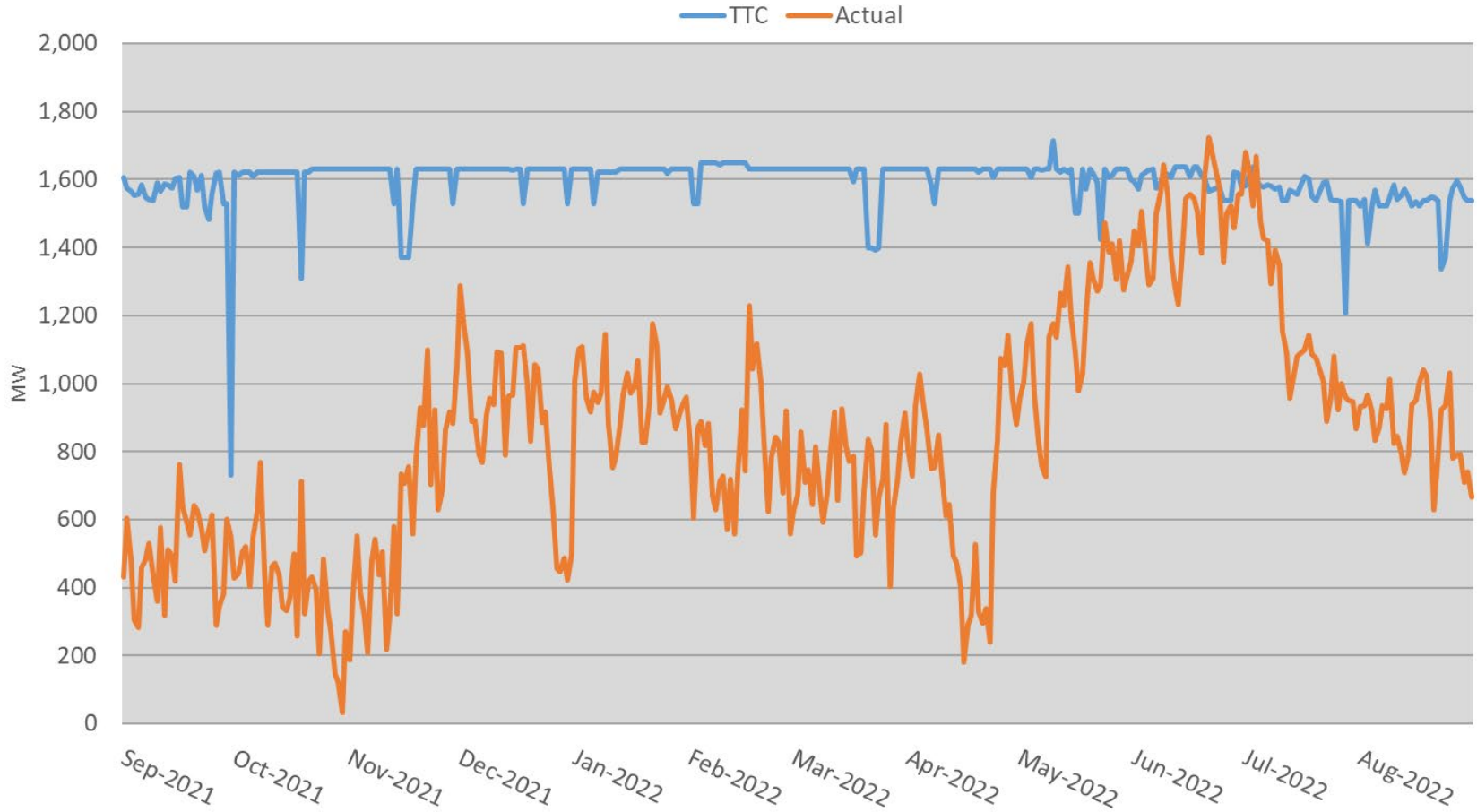
Actual Flow vs Dynamic Total Transfer Capacity - NOEL



Actual Flow vs Dynamic Total Transfer Capacity - SOA

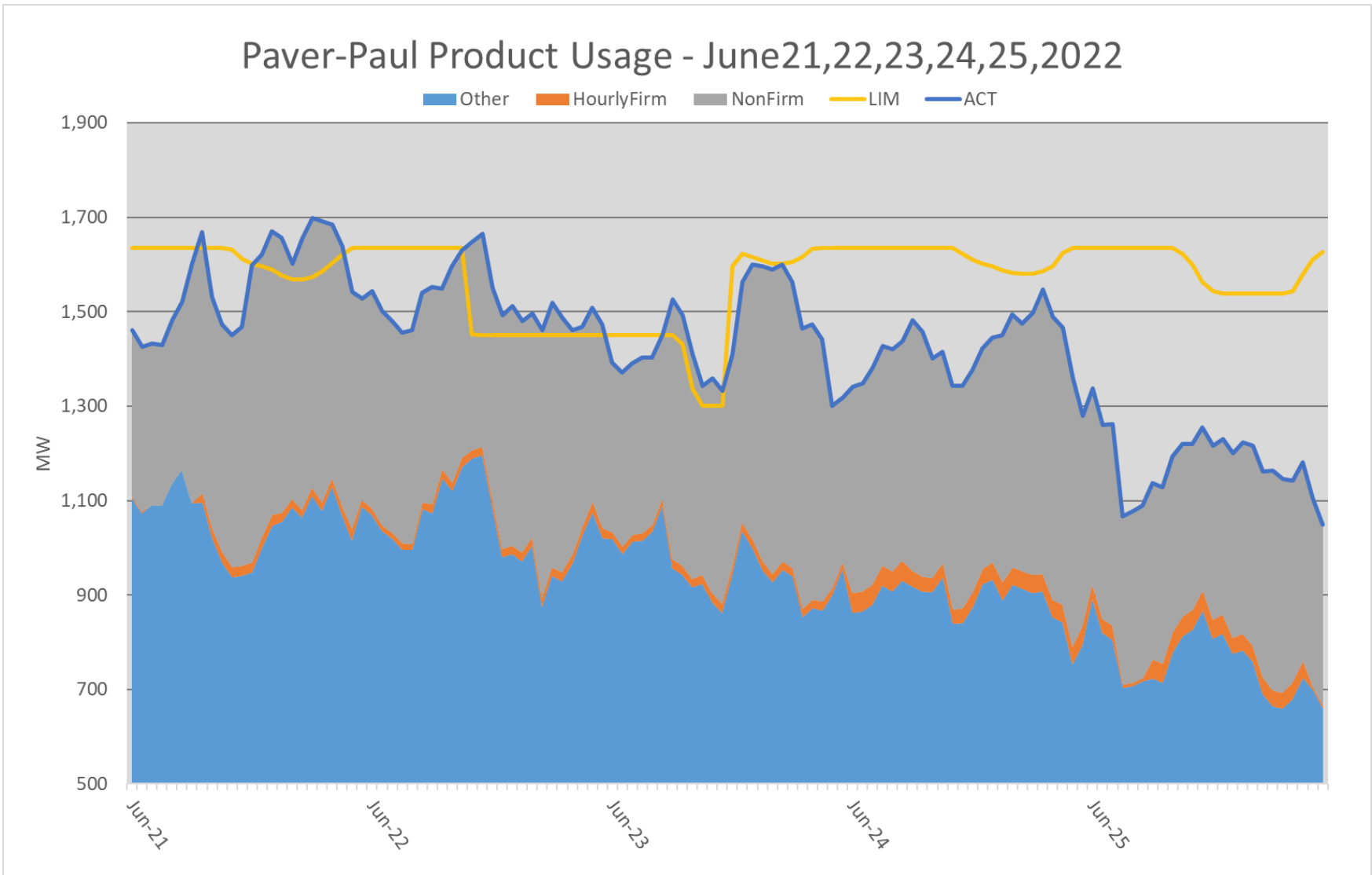


Actual Flow vs Dynamic Total Transfer Capacity - Raver-Paul



System Event Details

Event	Occurrence(s)	Notes
Curtailments:	3	Raver-Paul path June 23, 2022
Flow-Based Path Redispatch:	0	Discretionary, NT, and Emergency
TLR Avoidance Events (15 min segments):	16	4 hours, both Firm and Non-Firm
Refused TSRs due to TLR Avoidance:	41	
Outages resulting in Events:	1	(TACOMA-TPWR NORTHEAST NO 2 230KV LINE)
Percentage of hours actual flows were within 20% of TTC	.84% System-wide	1.92 (across NOEL path)



Dispatcher Actions

- Responded to Outages by adjusting TTCs
 - TTC reduced from 1636 MW to 1450 MW at 10 AM on June 22, 2022.
 - TTC reduced further to 1400 MW then 1300 MW between 7:30 and 8:00 on June 23
- No Redispatch (discretionary, NT, or emergency)
- 3 Curtailments needed (HE08 339 MW, HE09 360 MW, HE10 500 MW)
- 4 hours of TLR Avoidance

Wrap Up

- This will be the final Transmission Usage Update and concludes the requirement set forth in the TC-20 settlement.
- See additional transmission data at the TC-20 Hourly Firm page:
<https://www.bpa.gov/energy-and-services/transmission/hourly-firm-data-monitoring-evaluation>.
- Please send Questions/Comments to techforum@bpa.gov, with a copy to your Account Executive.