



Transmission Use Update

3/17/2021



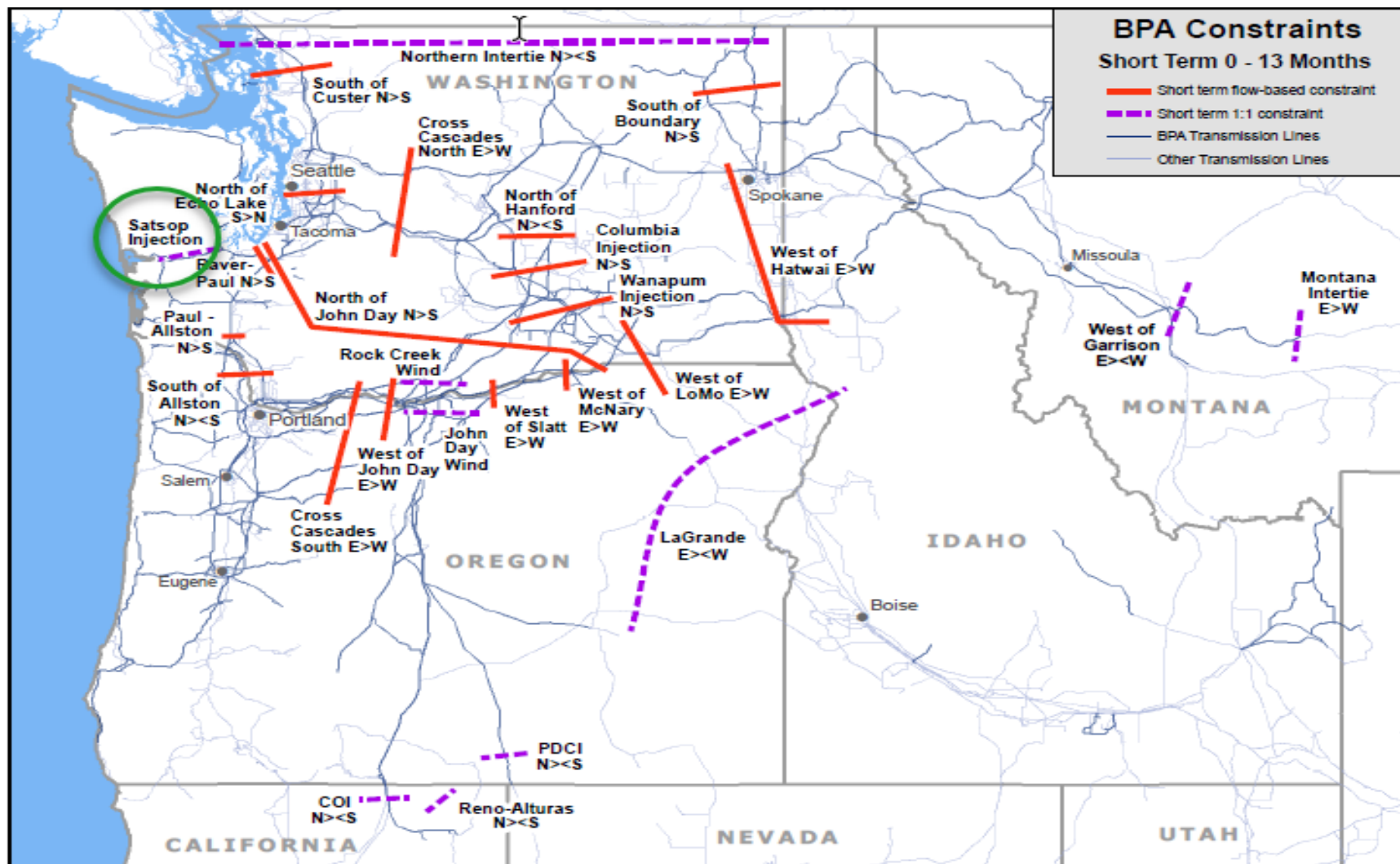
Objective

BPA is providing the following Transmission Usage Data:

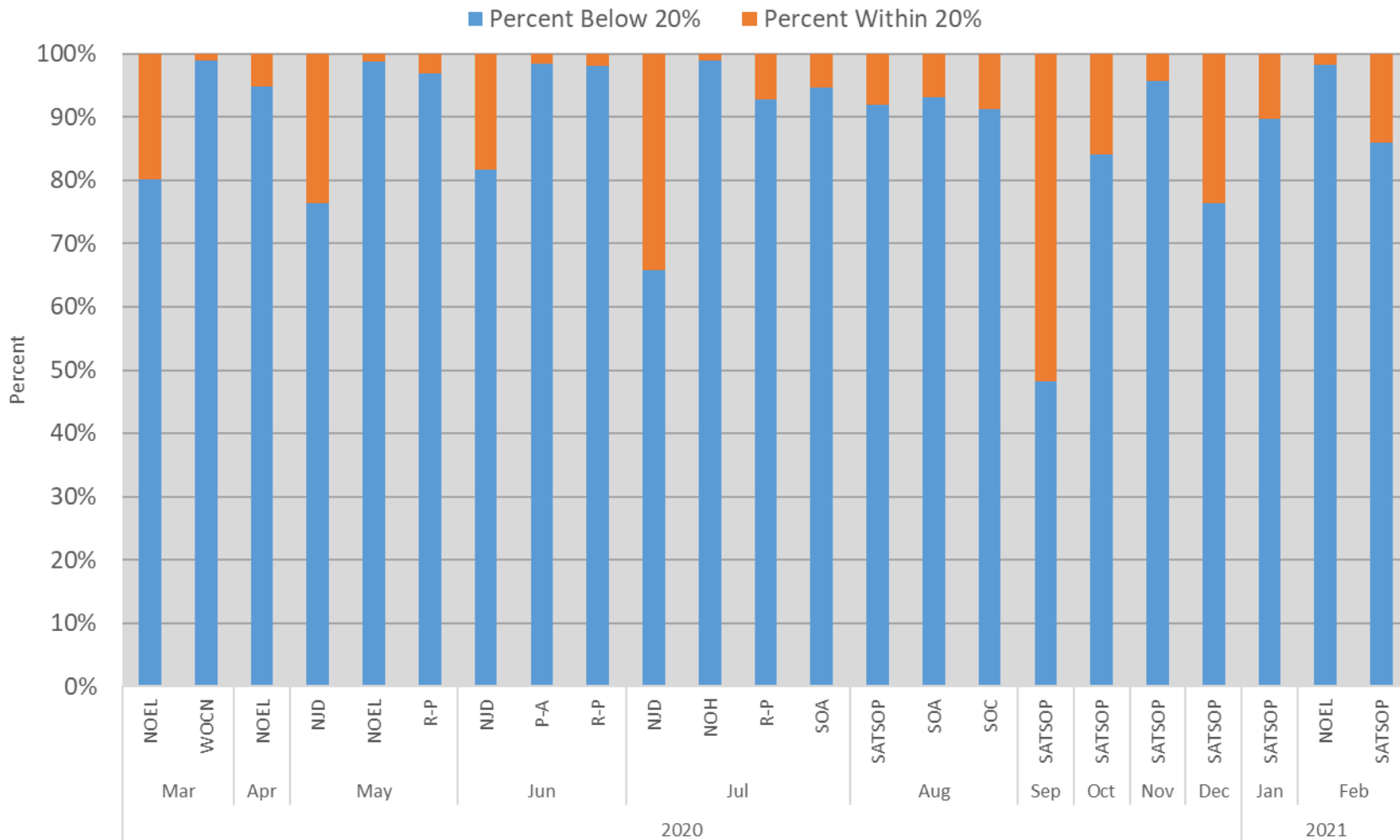
- Congestion data from the previous 3 months (December - February)
- Flows on North of Echo Lake (NOEL)
- Details of outages impacting NOEL



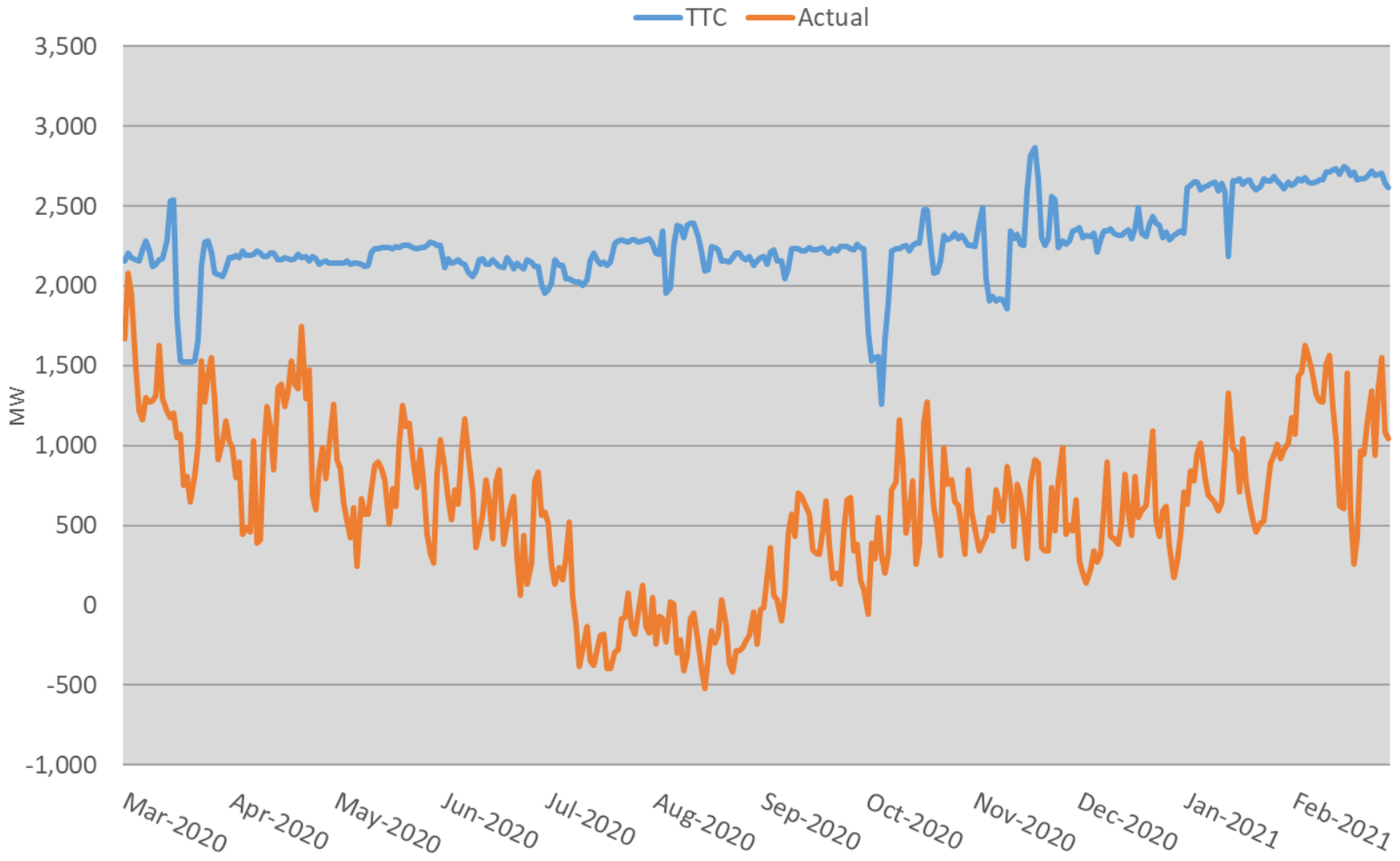
ATC Short-Term Constraints



Actual Flows Within 20% of Dynamic TTC



Actual Flow vs Dynamic TTC- NOEL





System Event Details

Curtailments:	0 (System-wide)
TLR Avoidance Events (15 min segments):	0 (TLR Avoidance Events)
Refused TSRs due to TLR Avoidance:	0 (Refused TSRs due to TLR Avoidance)
Planned Outages:	0 (3 Unplanned- Detailed on following slide)
Flow-Based Path Redispatch:	0 (Discretionary, NT, and Emergency)
Percentage of hours where actual flows were within 20% of TTC:	1.47% - System-wide (2.45% across NOEL Flowgate)



NOEL Outage Summary

TTC (MW)	TTC Variance (MW)	Annotation	Start	Stop
2779	-	Prior to Outages		2021-01-13 00:05 PS
2509	-270	SNO-KING – MAPLE VALLEY NO 2 230KV LINE	2021-01-13 00:05 PS	2021-01-13 00:18 PS
2409	-100	+MONROE – NOVELTY HILL NO 1 230KV LINE	2021-01-13 00:18 PS	2021-01-13 07:24 PS
1996	-413	+SNO-KING – MAPLE VALLEY NO 1 230KV LINE	2021-01-13 07:24 PS	2021-01-13 18:52 PS
2679	+683	Both SNO-KING – MAPLE VALLEY lines back	2021-01-13 18:52 PS	2021-01-13 19:42 PS
2779	+100	MONROE – NOVELTY HILL line back	2021-01-13 19:42 PS	

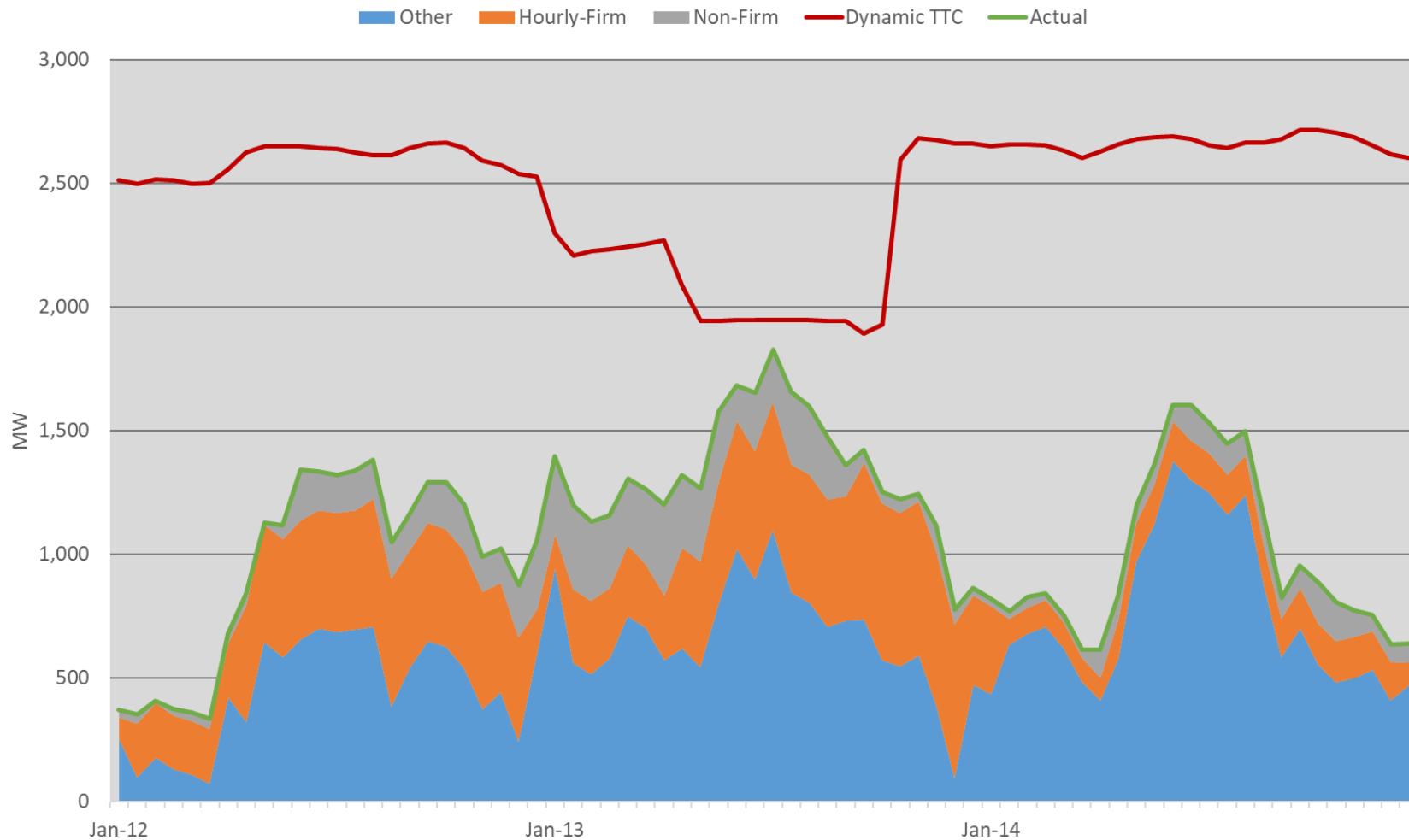


Dispatcher Actions

- Responded to outages by adjusting TTCs
- No redispatch needed (discretionary, NT, or emergency)
- No curtailments needed
- No TLR Avoidance needed

Takeaway: The Transmission System is efficient and is absorbing events with potential negative impacts effectively

Product Usage - NOEL - Event Specific



Wrap Up

- See additional transmission data at the TC-20 Hourly Firm page:

<https://www.bpa.gov/transmission/CustomerInvolvement/TC20Implementation/HourlyFirm/Pages/default.aspx>

- Please send Questions/Comments to techforum@bpa.gov, with a copy to your Account Executive