

# Future State and Our Customers



**Seattle City Light**

WE POWER SEATTLE

# Seattle City Light

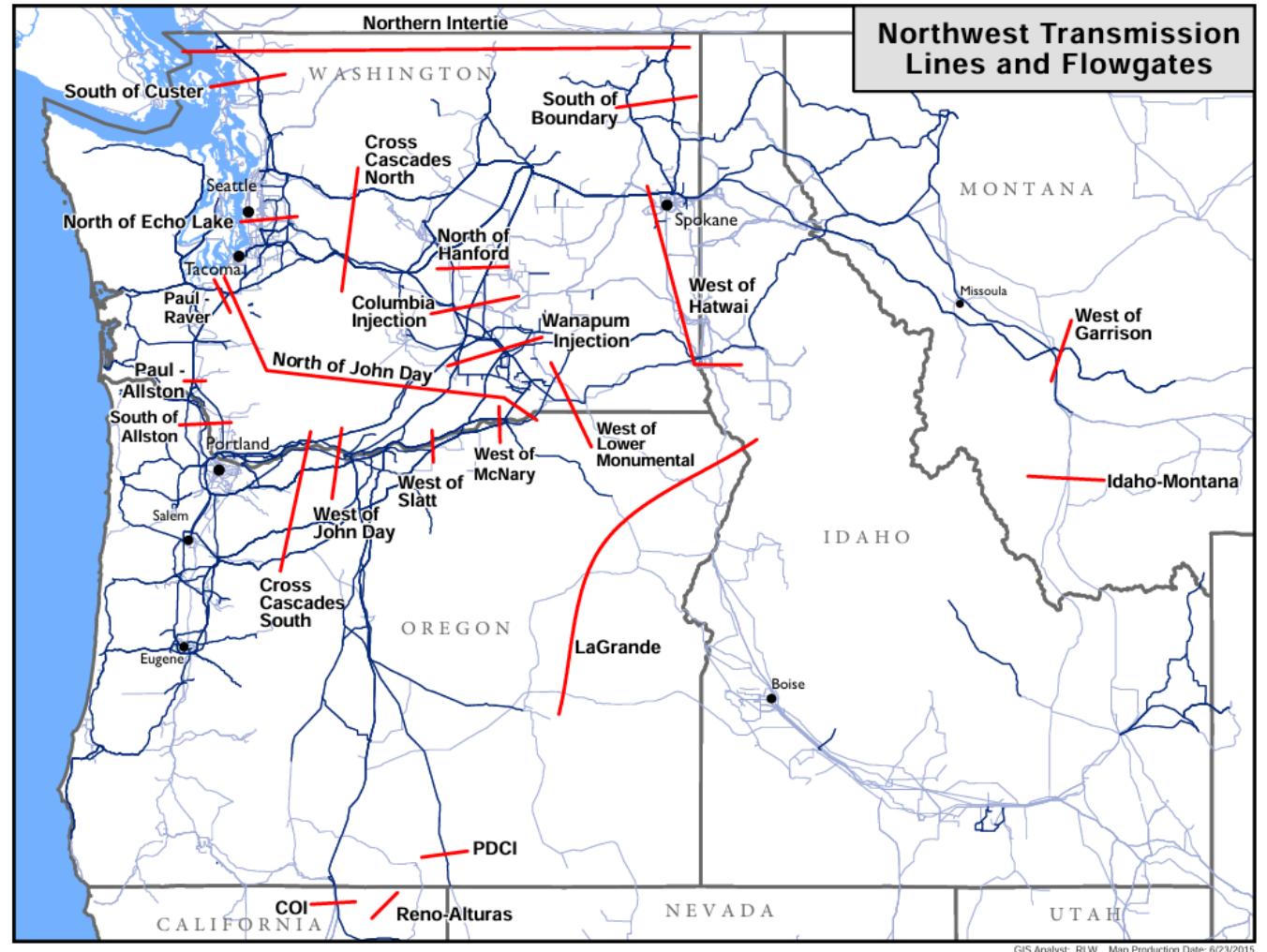
---

- ~500,000 metered customers
- ~660 miles of transmission lines
- ~2000MW of winter peak load
- ~1100MW SCL resources dependent on BPA Transmission
- Nearly all market purchases dependent on BPA Transmission
- We cannot serve our load today or in the future without BPA Transmission



# Regional Needs

- Residential Load Growth
- Electrification Load Growth
- Industrial Load Growth
- Data Center Load Grow
- Carbon free resources grow
- Coal/Gas Retirements
- Unconstrained Markets





# The Future State

---



## **Proactive Tx Planning**

BPA uses a probabilistic study approach to build ahead of Customer Need.

## **Fast Execution**

Projects energized in 5 to 6 years from inception, firm service granted

Partnerships and Customer Builds

## **Interim non-firm service**

Offered within 60 days of request

# Why plan for this Future State?

- Customer load growth will be served reliably
- Faster access to new resources
- Less Scarcity = Lower Prices
- Lower Prices = Lower Rates



# We need to support BPA getting to the Future State

---



We believe the Future State is the lowest cost route for the region and our customers

The Future State ensures maintaining our superior level of grid reliability

We recognize policy changes have adverse impacts

We believe the benefits of this change far outweigh impacts, costs, and risks of not changing.

# THANK YOU

---



**Seattle City Light**