



Grid Access Transformation Future State Workshop

April 15, 2026



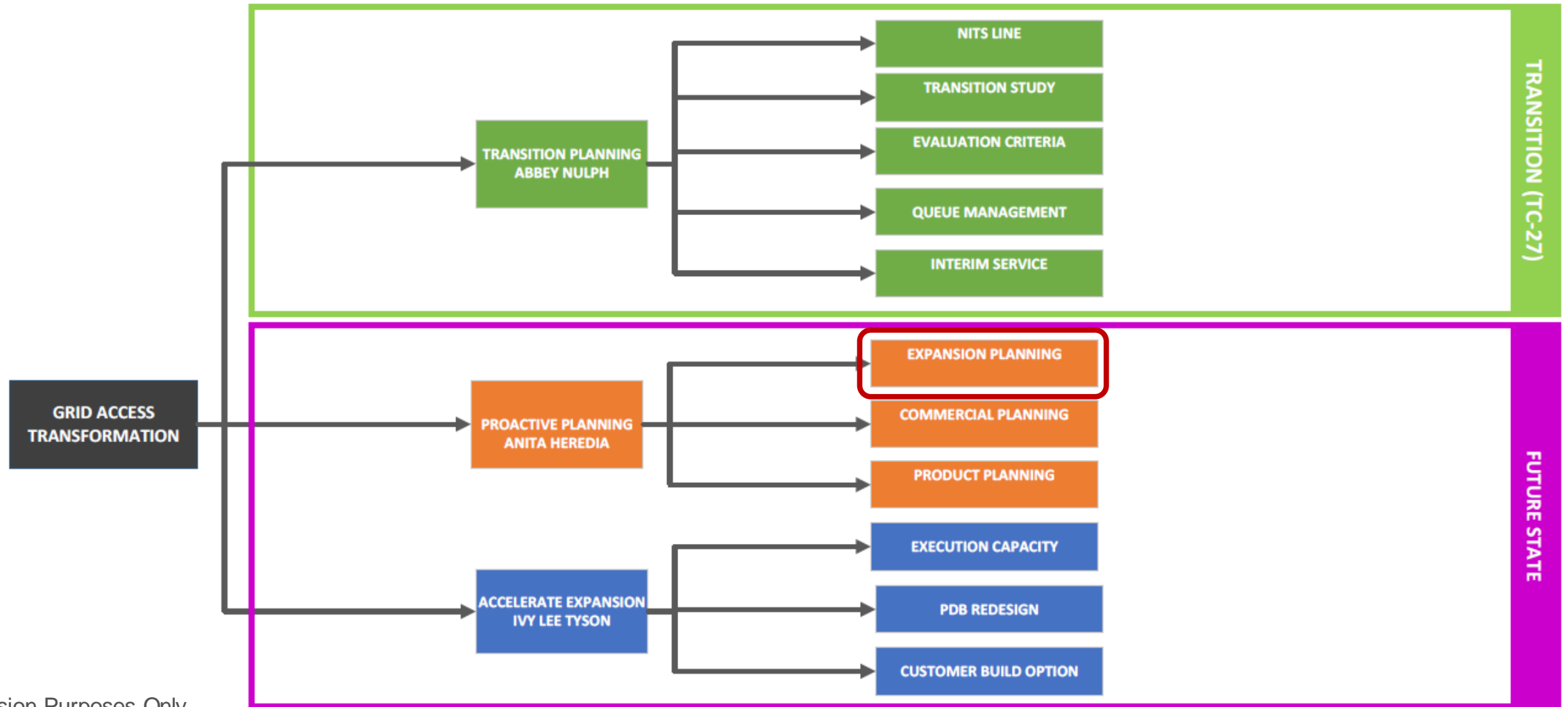


Proactive Planning Program Update

Expansion Planning



Grid Access Transformation Program Structure



GAT Proactive Planning Scope

- Expansion Planning will:
 - Modernize our transmission planning by implementing a 10-year and a 20-year scenario-based framework
 - Establish a repeatable planning cycle that:
 - Integrates meaningful stakeholder engagement
 - Generates a portfolio of High Opportunity Transmission (HOT) projects
 - Is guided by a transparent expansion selection process
 - Support emerging technologies and economic growth across the Northwest
- Commercial Planning will provide full plans of service, fee & cost models, and contractual structures
- Product Planning will evaluate potential future products that could possibly function in a market-based structure

Proposed Order of Operations

- April 2026 – May 2028*: Expansion Planning
- May 2027 – October 2028*: GAT Transition Study
- June 2026 – October 2030*: Commercial Planning
 - Commercial planning business model development
 - Customer Engagement
 - Commercial studies and associated activities
- Now – October 2030: Product Planning
 - Exploratory research
 - Customer engagement
 - Activity planning
- *Dependent on length and results of TC-27 Proceeding

Proposed Expansion Planning Process

- Methodology:
 - Expansion (LTCE), Production Cost Model, and Power Flow Analyses leveraging 10Y and 20Y Datasets
 - Involves Customer 3rd Party/Utility Stakeholder Engagement
 - Robust Scenario Development
 - Leverages existing studies and data bases (Example – WestTEC)
- Deliverable:
 - Portfolio(s) of main grid projects to meet 10Y-20Y projected scenario & sensitivity needs
- Timeline
 - Dependent on length and results of TC-27 Proceeding

**LONG-TERM FUTURE STATE
EXPANSION STUDY 2-YEAR CYCLE PLAN**

FY 2026		FY 2027				FY 2028	
Q3	Q4	Q1	Q2	Q3	Q4	Q1	Q2

Study Plans, Assumptions, & Criteria

Load, Generation, Topology Base Assumptions

Load, Generation, Topology Inclusion Criteria

Develop Scenario & Sensitivity Planning

Review Available Data Sets

• Cycle 1: Phases 1 & 2 Study Plan

- Main Grid Current System Flow Gate Analysis Plan
- High-level Project Development Plan

Project Refinement Plan

Identify PCM/LTCE System Constraints

Identify PCM/LTCE System Constraints

Data Development

Phase 1

PCM, LTCE, PowerFlow Data Sets: Validate/Update, Align/Map

• Develop Existing Project List

- Rank via Inclusion Criteria
- Update Data Sets as Needed

Gather Updated Data Load, Generation, Topology Data

Customer + Data Request

3rd - Party Utility/Regional

Engagement Activities

Phase 2

PCM, LTCE, PowerFlow Data Sets: Validate/Update, Align/Map

WECC 20-Year PowerFlow Case Available, Analyzed, and Verified

Needs Study

Phase 1

- Iterative LTCE, PCM, and PowerFlow Needs Devt.
- 3rd - Party Engagement

Phase 2

Sensitivity Study

FlowGate & Tx System Needs Report

Project Development

Phase 1

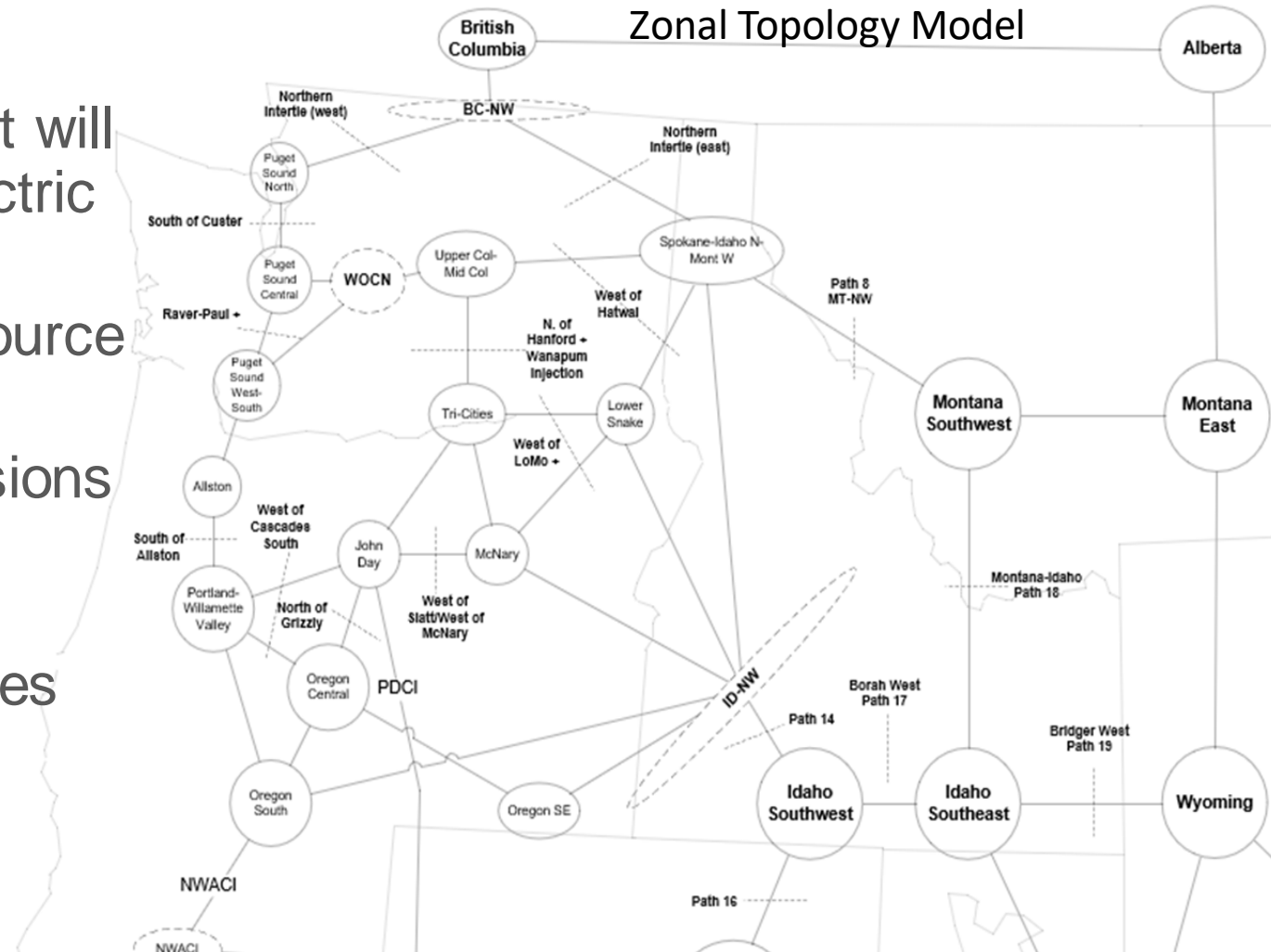
- Identify-Develop Project (High-Level)
- Document & Report on Projects

Phase 2

- Refine Existing, Develop New Potential Projects
- Document & Report on Projects

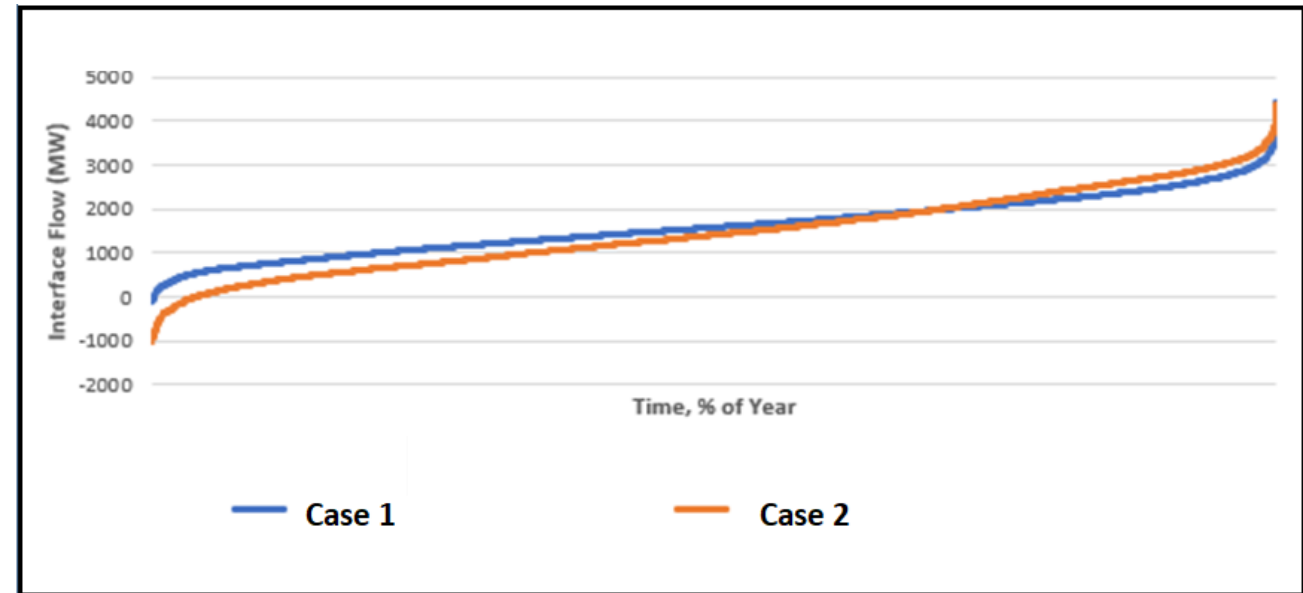
Long-Term Capacity Expansion (LTCE)

- Projections and insights into the potential capital expenditures that will be necessary on the regional electric system over the next 20 years
- Co-optimization of least-cost resource and transmission investments
- Improved insight for difficult decisions such as new transmission and generator builds
- Implications of major public policies
- Coordinated zonal modeling assumptions with other entities



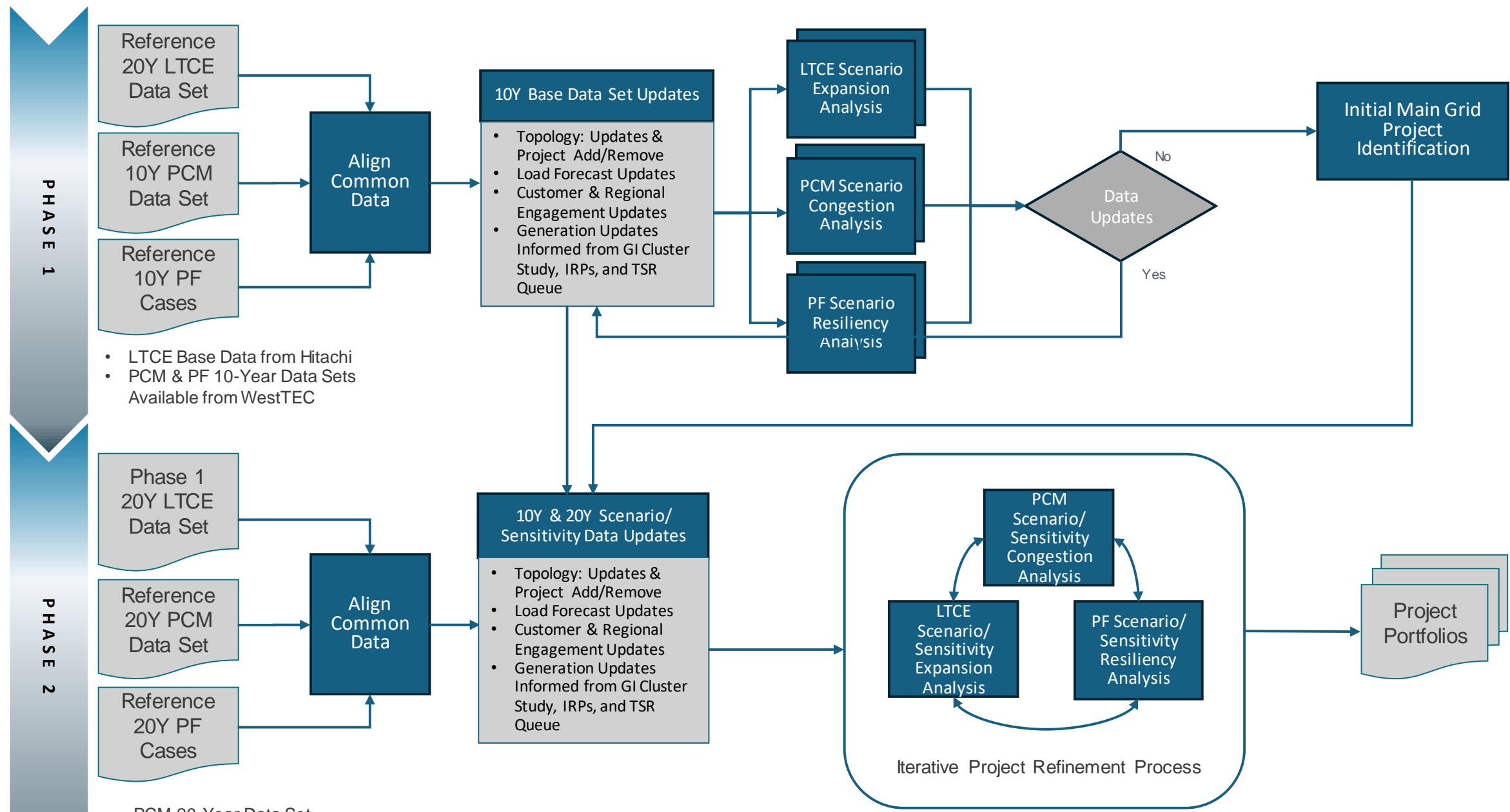
Production Cost Modeling (PCM)

- Security-constrained economic dispatch (SCED) simulation minimizes costs of serving loads from available generating resources without violating constraints for each hour
- Regional perspective
- Simplified DC power flow approximation
- Benefit estimates from “All Lines in Service” simulations can be adjusted to account for increased expansion value during outages and severe weather
- Project transmission utilization and congestion over the course of a year.
- Assess how plausible load, resource, and transmission topology futures will impact Main Grid interfaces to prioritize expansions.



Resiliency/Power Flow (PF)

- Confirm that the future power system can withstand credible contingencies without thermal overloads or voltage violations/instability
- Inform transmission constraint limit assumptions used in PCM and LTCE
- Analyze full AC power flow performance of representative steady state condition snapshots

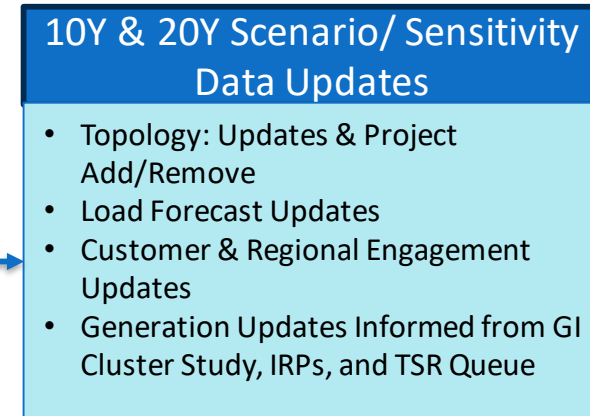
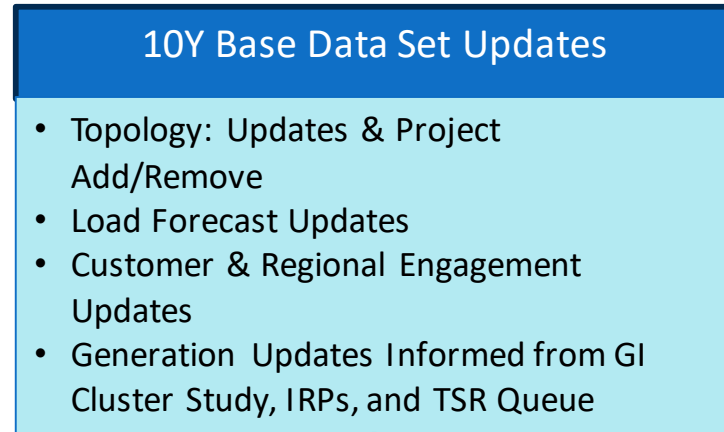


Proposed Expansion Study Methodology

Discussion Purposes Only

Expansion Study Data Sets

- 10 Year
 - Load
 - BPA's Agency Load Forecast
 - LaRCs
 - Resources
 - Existing Generation
 - Potential GI Cluster Additions
 - Integrated Resource Plans
 - Topology
 - BPA Grid Modeling & WECC Planning Cases
 - Regional Planning (Western Power Pool / WestTEC)
 - Known Project Statuses
- 20 Year
 - WestTEC & WECC 20Y Models
 - Input from 10 Year Analysis



Data Collection & Updates

- For 10Y, BPA will gather the current stakeholder data provided to BPA and will present for stakeholder feedback and review
- Stakeholders provides feedback and any significant data updates
- BPA may incorporate into foundational and/or sensitivity adjustments for LTCE, PCM and PF data sets
- Future Data Requests for 20Y:
 - Collaborative scenario/sensitivity development
 - Enhanced load details
 - Ranges
 - Unique area plans (20Y)
 - Key drivers for future load demand
 - Population demographics (industrial, commercial, etc.)

Expansion Planning: Proposed Customer Engagement



Quarterly Updates



Transparent



Collaborative



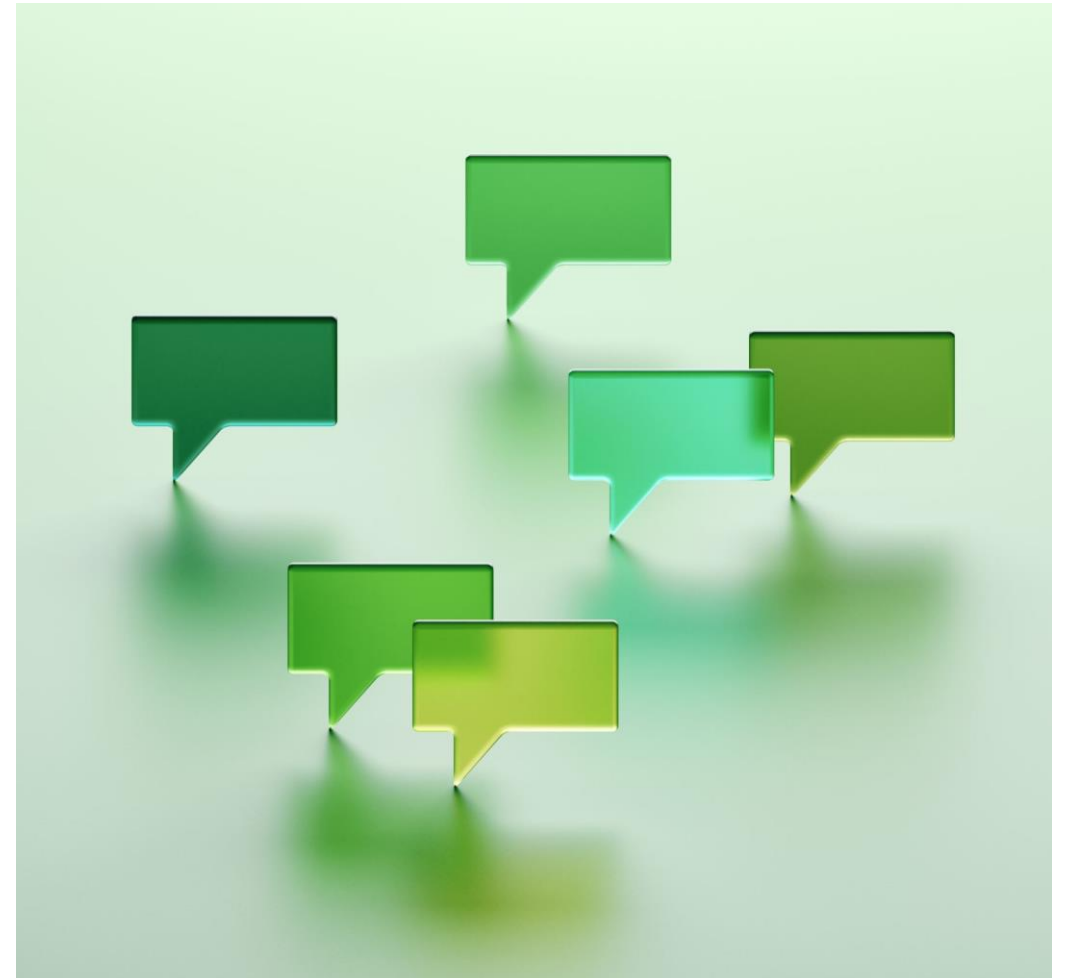
Proposed Upcoming Workshops

June: Data Collection

August: Present Gathered Data

Next Steps

- We welcome your comments, questions and feedback
- April 30: Please send feedback on the April 15th workshop content to techforum@bpa.gov with a cc to your Account Executive.
- June: Next customer workshop focused on data collection.





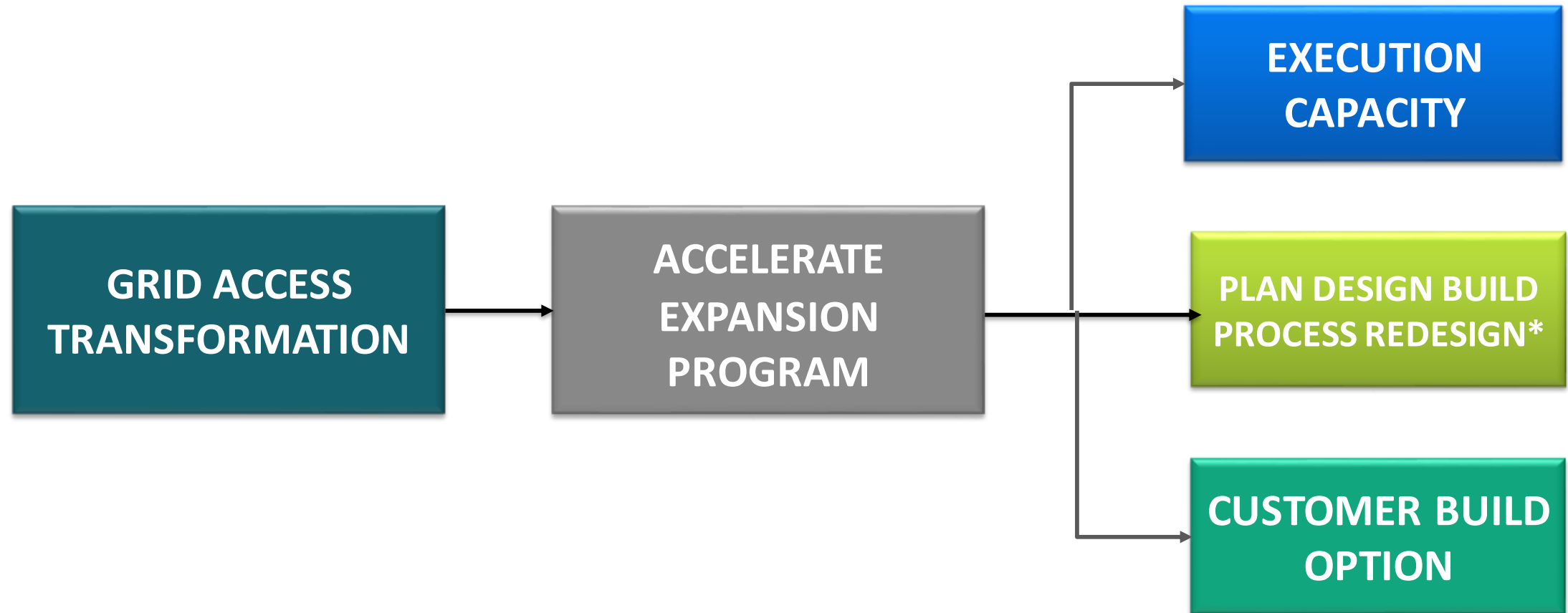
Accelerate Expansion Update

April 15, 2026

Ivy Lee Tyson



Accelerate Expansion Workstreams



*PLAN DESIGN BUILD PROCESS REDESIGN WAS PREVIOUSLY CALLED SPEED.

Execution Capacity

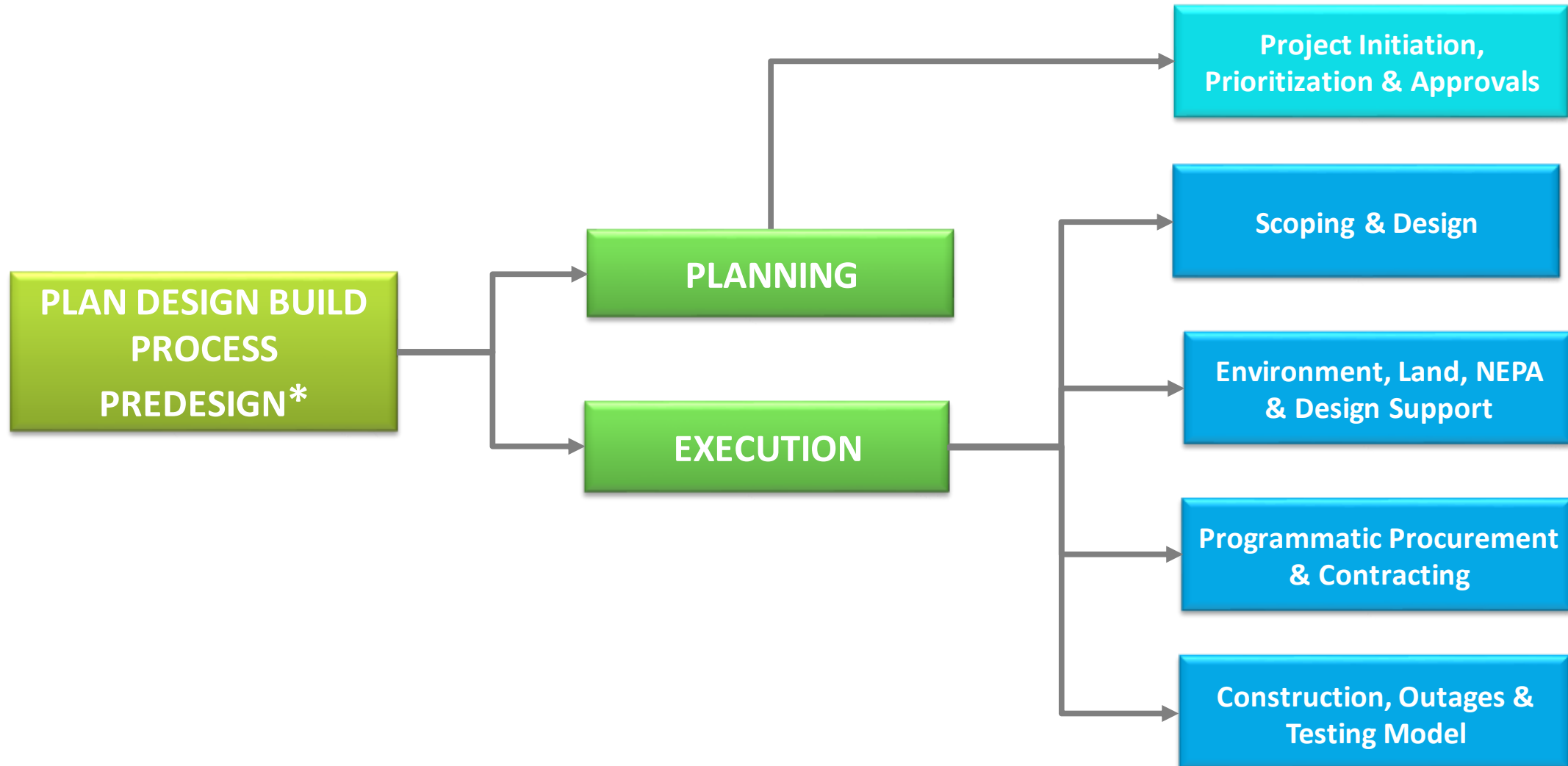
WORKSTREAM	INITIATIVE	STATUS
<div data-bbox="104 789 614 1005" style="background-color: #0070C0; color: white; padding: 10px; text-align: center; font-weight: bold;"> EXECUTION CAPACITY </div>	<div data-bbox="695 472 1205 688" style="background-color: #70C040; color: white; padding: 10px; text-align: center; font-weight: bold;"> TIDES EPC CONTRACT STRATEGY </div>	<ul style="list-style-type: none"> Phase 2 RFP complete. Currently in negotiations. On-Board in May 2026
	<div data-bbox="695 786 1205 1002" style="background-color: #70C040; color: white; padding: 10px; text-align: center; font-weight: bold;"> STRUCTURE </div>	<ul style="list-style-type: none"> Reviewed engineering support for Contracting Officer Representatives (CORs) Review resulted in a reorganization which was effective in January.
	<div data-bbox="695 1096 1205 1312" style="background-color: #70C040; color: white; padding: 10px; text-align: center; font-weight: bold;"> SUPPORTING BUSINESS PROCEEDURES & PROCESSES </div>	<ul style="list-style-type: none"> Business processes being developed for the new organization. An EPC assessment has been completed and is under management review.

Plan Design Build Process Redesign*

WORKSTREAM	INITIATIVE	STATUS
<p data-bbox="101 735 621 951">PLAN DESIGN BUILD PROCESS REDESIGN*</p>	<p data-bbox="690 571 1205 786">PLANNING</p> <p data-bbox="698 911 1212 1126">EXECUTION</p>	<ul data-bbox="1284 558 2453 1175" style="list-style-type: none"> • Internal high-level review of plan, design, build project lifecycles completed in January 2026 • Review resulted in a planning initiative and an execution initiative with five process improvement projects under them. • Project leads have been assigned and teams are being staffed. Scoping is underway with deliverables being identified and schedules built.

*PLAN DESIGN BUILD PROCESS REDESIGN WAS PREVIOUSLY CALLED SPEED.

Plan Design Build Redesign Projects



Customer Build Option

WORKSTREAM	INITIATIVE	STATUS
<div data-bbox="104 686 614 901" style="background-color: #008080; color: white; padding: 10px; text-align: center;"> CUSTOMER BUILD OPTION </div>	<div data-bbox="698 486 1207 701" style="background-color: #00b050; color: white; padding: 10px; text-align: center; margin-bottom: 20px;"> CONTRACTUAL CAPBILITIES </div> <div data-bbox="703 829 1212 1043" style="background-color: #00b050; color: white; padding: 10px; text-align: center;"> TECHNICAL & BUSINESS CAPABILITIES </div>	<ul style="list-style-type: none"> • Review of internal processes and resourcing is on-going. • Benchmarking is under way. • 2027 target for having standardized processes and business practices in place.

Five Year Timeline

