



# **Grid Access Transformation Future State Workshop Accelerate Expansion Program**

**December 17, 2025**



# Grid Access Transformation

## Evaluation Criteria (TC-27)

Requirements to submit a completed application

## Interim Service (TC-27)

Offer earlier access with informed risk

## LTF Queue Management (TC-27)

Activating what can move forward

## NITS Forecasts (TC-27)

Anchored in customers' own forecasts, for which they are accountable



## **Future State**

### **Proactive Planning**

Move ahead of requests

### **Accelerate Expansion** ★

Restructure plan, design, and build processes to meet regional urgency

# Accelerate Expansion Vision

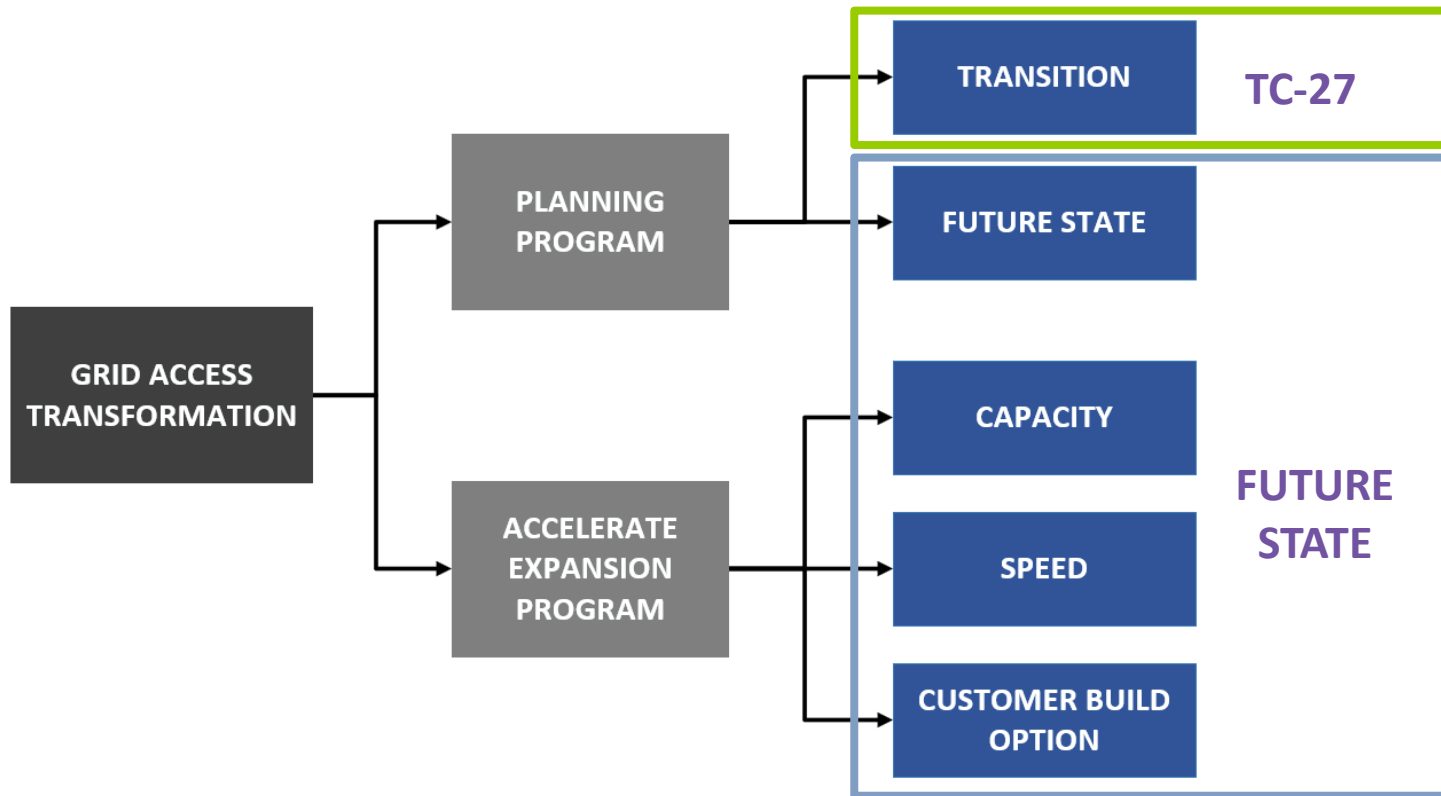
## **Achieve a Request to Service Delivery Cycle of 5 to 6 Years or Less:**

- By 2030 establish a commercial expansion delivery pipeline that enables BPA to provide service in 5–6 years or less on a consistent basis, across customer types.

# Accelerate Expansion: Principles

- Preserve the safety and reliability of the transmission system.
- Meet all statutory, compliance and reliability obligations.
- Significantly decrease the plan, design, build project lifecycle.

# GAT Work Structure



# Capital Execution Capacity

Focused on increasing contracting capacity for capital project execution and how we manage those contracts

- Work started in FY25 and is well underway
- Work includes implementing a major new contract strategy called Transmission Infrastructure Delivery and Execution Strategy (TIDES)

# TIDES Overview

- To meet the increasing needs of the capital portfolio, Transmission & Supply Chain are partnering on a new contracting strategy called Transmission Infrastructure Delivery & Execution Strategy (TIDES).
- TIDES will support both PCM and SCM delivery models and both sustain and expansion.



# TIDES Acquisition Goals

- Acquire more capacity to execute on Transmission's growing capital portfolio through outsourcing
- Establish long-term partnerships with qualified contractor teams
- Obtain more price and schedule competition to provide value for customers and rate-payers



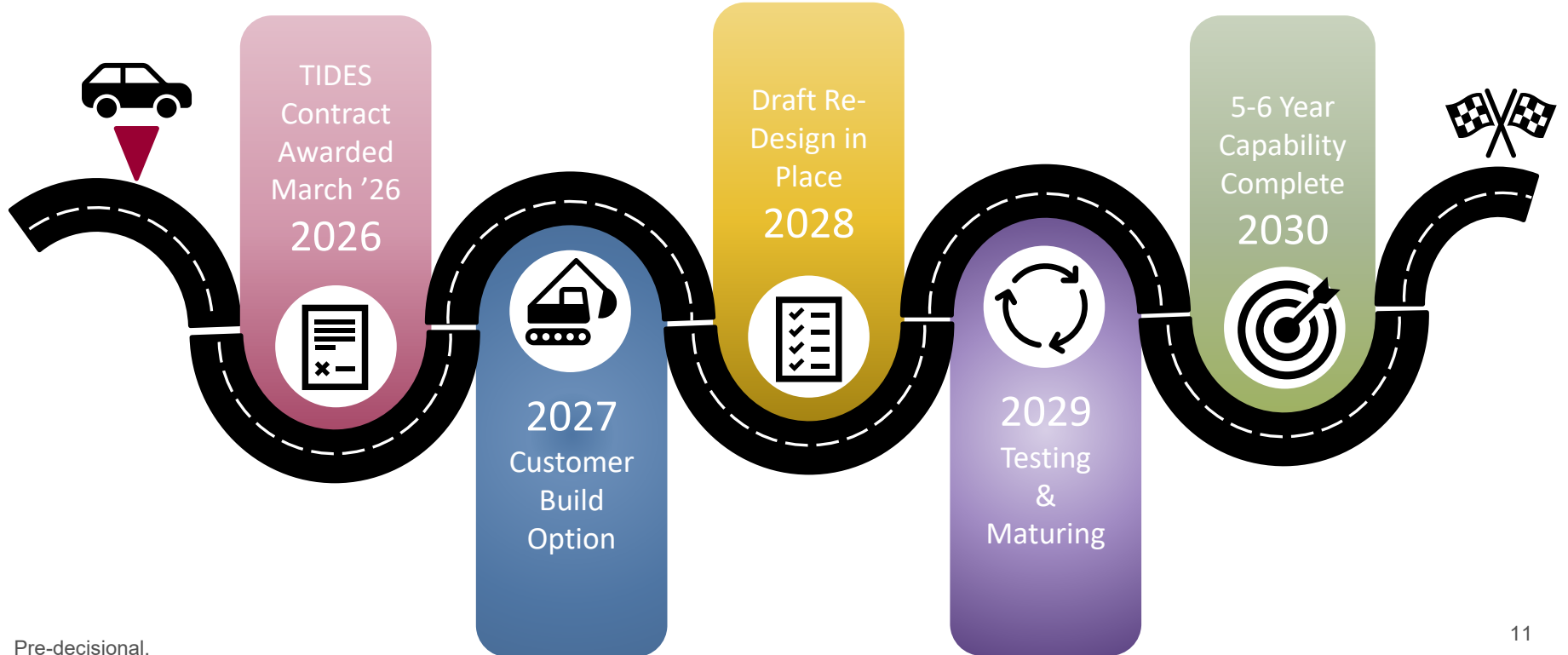
# Speed

- Focused on significantly reducing the amount of time to deliver commercial expansion projects
  - Scope includes all types of commercial expansion including line & load, generation interconnection and transmission service requests

# Customer Build Option

- Developing and implementing standard processes and business practices for customers to build BPA owned, maintained and operated transmission assets
  - Scope includes all types of commercial expansion including line & load, generation interconnection and transmission service requests

# Five Year Roadmap



# Questions?