

Instructions on the Public Rate Impact Model

The public rate impact model for BP-22 Final Proposal compares BP-20 rates to BP-22 rates in three ways (below is a description of the different rate comparisons.) Like previous public rate impact models, the model calculates Tier 1 rate impacts and does not include Tier 2 charges, Transfer Charges, and Resource Support Services.

1. Effective rate change from BP-20 to BP-22. The BP-22 effective rates are based on the revenue collection under all customer charges, load shaping, and demand rates (net of discounts) for non-slice sales by customer divided by total customer load and is denominated in \$/MWh. Effective rates from the BP-20 public rate impact model are compared to BP-22 effective rates.
2. Rate Change Only. This method takes the BP-22 forecast billing determinants assumed in setting BP-22 rates, and applies BP-20 and BP-22 rates to these constant billing determinants (net of discounts). A rate change is then computed from BP-20 to BP-22 rates.
3. Hybrid Approach. BPA Staff argue that since rates are now denominated in terms of a share of the BPA system, and since that system is not necessarily equal across rate periods, holding system size constant in evaluating a rate change by customer is imperfect. An attempted solution is the hybrid approach, whereby we take BP-20 Tier 1 System and RHWM values as fixed, and apply the updated 2022 load forecast to conditions as if we were in 2020. Therefore, 2022 loads and existing resources are held constant, but not the system or RHWM allotments of the system to individual customers. Then, BP-20 rates are applied to the recalculated BP-20 billing determinants (assuming the 2022 load and CSP forecasts), and BP-22 rates are applied to the BP-22 billing determinants. A rate change is then computed from BP-20 to BP-22 rates.

Setting the Hybrid approach.

On the Init tab, select cell R9, and change to “Yes”.

Setting the Rate Change Only approach.

On the Init tab, select cell R9, and change to “No”.

	P	Q	R	S	T	U	V
5	Select Current Year?						
6			2022				
7							
8	Use Previous BP-20 Billing Determinants adjusted for BP-22 Loads and CSP?						
9			Yes				
10							

To include the impact of Tier 2 Load Shaping.

On the Init tab, select cell R12, and change to “Yes”.

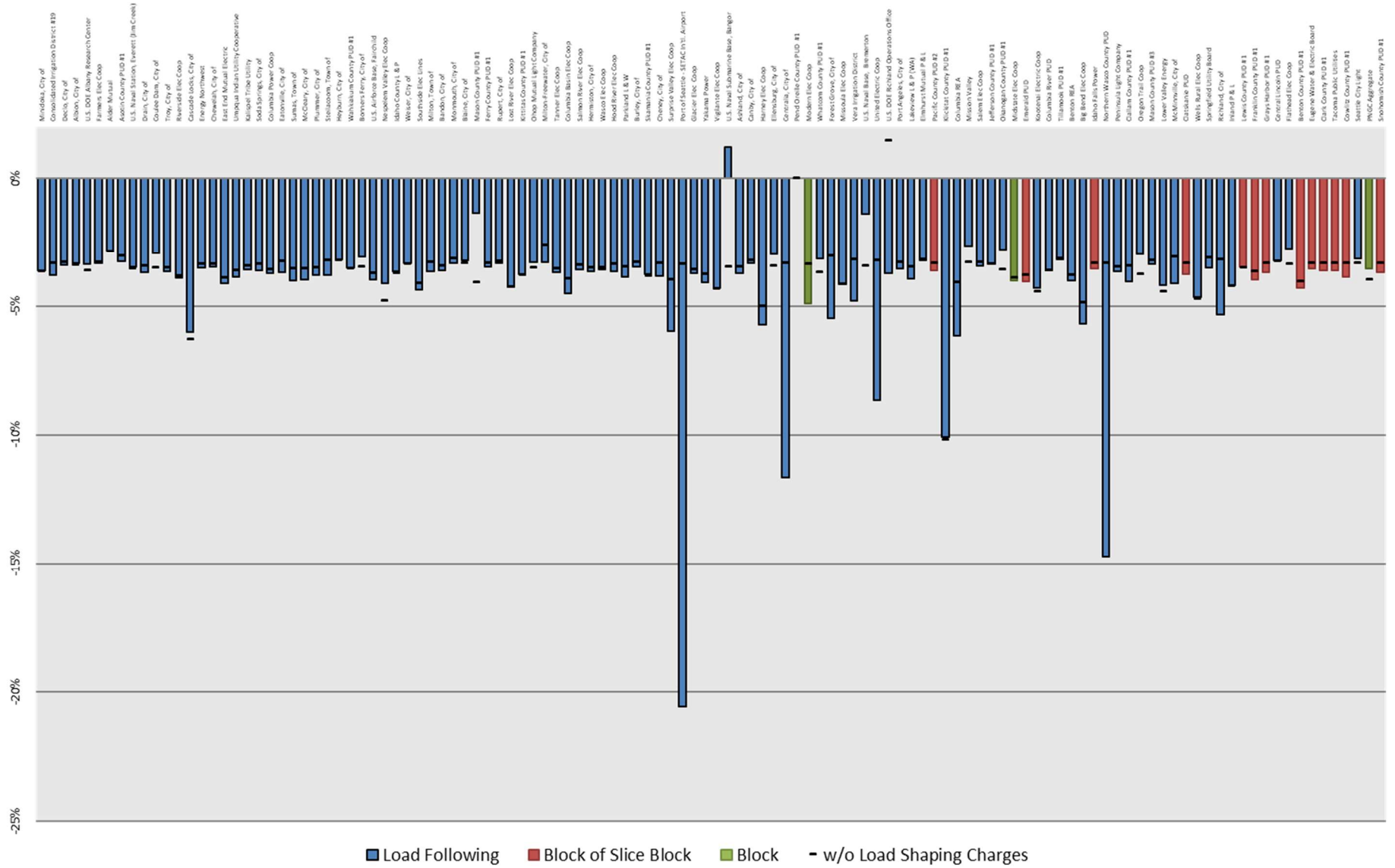
	O	P	Q	R	S	T	U	V
4								
5		Select Current Year?						
6				2022				
7								
8		Use Previous BP-20 Billing Determinants adjusted for BP-22 Loads and CSP?						
9				Yes				
10								
11		Include Tier 2 Load Shaping in Tier 1 Rate Impacts?						
12				No				
13								

Model Results are stated in the “Outputs” Sheet, and include:

- a) Rate Increase Including Slice and LS – Does not include the value of slice secondary, but does include the value of firm slice sales
- b) Rate Increase NonSlice – excludes the value of the slice product (firm and secondary).
- c) Rate Increase NonSlice and Excluding Load Shaping – removes the effect of load shaping billing determinant and rate changes by removing the load shaping charges altogether in both periods.
- d) Rate Increase NonSlice Effective Rate to Effective Rate – always computed whether or not Hybrid or Rate Change Only approaches are used.

Graphs are included showing non-slice rate changes from smallest customer to largest and cumulative MWh. The rate impacts in the graphs below are based on the hybrid approach and do not include Tier 2 Load Shaping.

Non-Slice Customer Rate Change BP-20 to BP-22 by Customer Type



Non-Slice Customer Estimated Rate Impacts - Ordered from Highest to Lowest

