



Provider of Choice Workshop

December 11 and 12, 2024

PROVIDER OF CHOICE

**POST
2028**

Slides Updated 12/9/2024



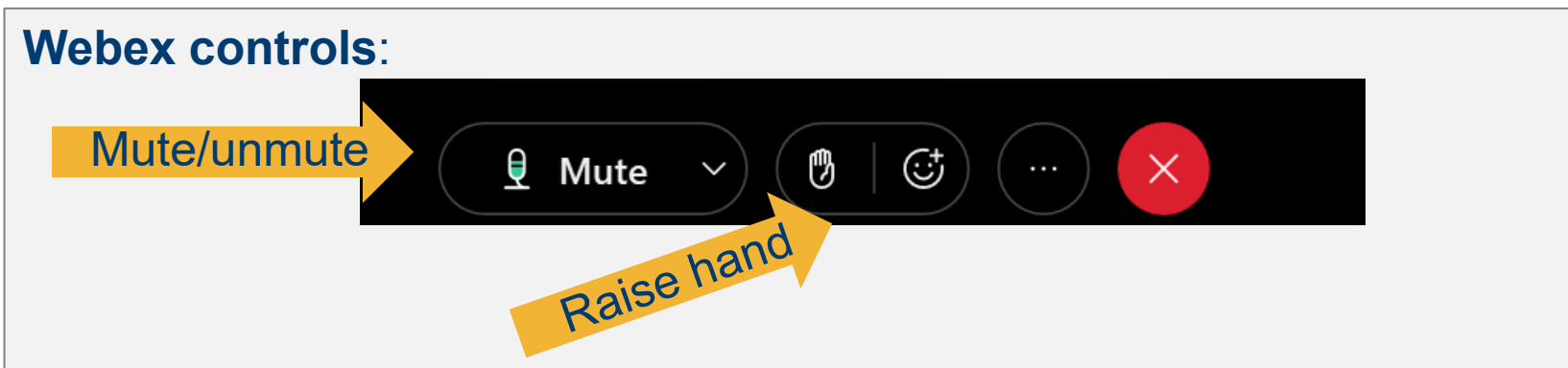
Notice of Ex Parte Communications

The Public Rate Design Methodology proceeding (PRDM-26) is occurring concurrent with this public meeting. The PRDM-26 proceeding is being conducted under section 7(i) of the Northwest Power Act and is subject to BPA's rules of procedure, including *ex parte*. **The *ex parte* rule prohibits BPA from discussing matters within the scope of a section 7(i) proceeding, unless proper notice is given. For that reason, issues and arguments concerning the PRDM and tiered rates for the post-2028 period should not be made in this meeting.** Please direct any such comments to PRDM-26, as described in the PRDM-26 Federal Register Notice.

Thank you.

Webinar Format

- Presenters will take pauses for questions and feedback (chat and raised hands).
- Webex attendees may only chat with the Webex meeting Host. The chat will be moderated by the Host and publicly-appropriate content re-posted.
- Raised hands and chats will be addressed in the order received.
- Please remember to state your name and organization.



Agenda: Wed. December 11, 9am - 4pm, Hybrid

Topic/ Contract Section	Discussion Type	Presenter	Est'd Time
Welcome and Agenda; Ex Parte Notice	Inform	Michelle Lichtenfels, Program Manager, Provider of Choice	9am - 9:10am
20.3 NLSLs and CF/CT Loads	Follow up	Kelly Olive, Contract Lead, Provider of Choice Kate Patton, Power Account Executive	9:10am - 10:15am
Ex. D NLSLs and CF/CT Loads	Follow up		
15 Metering	Follow up		
BREAK			10:15-10:30am
6 Public Rate Design Methodology	Follow up	Rob Burr, Account Specialist	10:30am - 11:30am
8 Applicable Rates	Follow up		
10 Tier 2 Remarketing and Resource Removal - LF	Follow up	Kevin Farleigh, Power Account Executive	
Ex. D RSS	Discussion	Jason Weinstein, Account Specialist	
16 Billing and Payment	Follow up	Robyn Miller, Account Specialist	11:30am - 12pm
Ex. G Terms Related to Transfer Service	Follow up		
Ex I Notices and Contact Information	Follow up		
20 Sections Prohibition on Resale, Priority of Pacific Northwest Customers, Use of Regional Resources,	Follow up	Kelly Olive, Contract Lead, Provider of Choice	
LUNCH			
11 Right to Change Purchase Obligation	Follow up	Rob Burr, Account Specialist	1-1:30pm
Ex. C LF - Purchase Obligations	Follow up	Rob Burr, Account Specialist	1:30pm-2:30pm
Ex. C Block - Purchase Obligations	Follow up	Kate Patton, Power Account Executive	
Ex. C LF - Purchase Obligations - Tier 2 Vintage Rate Alternative	Follow up	Rob Burr, Account Specialist	
BREAK			2:30pm - 2:45pm
7 CHWMs	Follow up	Kevin Farleigh, Power Account Executive	2:45pm-3:30pm
Ex. B CHWMs	Follow up		
Draft Contract Template Release - Comment Themes & Additional Discussion	Discussion	Kelly Olive, Contract Lead, Provider of Choice	3:30pm-4pm
Wrap up	Inform	Michelle Lichtenfels, Program Manager, Provider of Choice	

Note: Times are approximate. Lunch 12pm-1pm. Short breaks will be taken throughout the day.

Agenda: Thurs, December 12, 9am - 12pm

Webex Only

- The meeting plan is to continue discussions from December 11 as needed.
- If all agenda topics are sufficiently covered by end of the day on December 11, this meeting will be cancelled.

Workshop Norms & Expectations

- **Bonneville:** Provide open and inclusive opportunities for discussion and feedback.
- **Participants:** Provide feedback and share perspectives during workshops.
- **All:** Respect one another and assume good intentions. Bring a constructive mentality. Be solution-oriented. Identify “parking lot” items for distracting or off-topic issues.





RSS Approach

Resource Support Services (RSS)

- Regional Dialogue included RSS sections in the Tiered Rates Methodology.
- For Provider of Choice, the PRDM introduced an umbrella term: **Support Services**.
 - Support Services include both Resource Support Service and other Support Services (such as Transmission Scheduling Service).
 - The PRDM addresses Support Services pricing principles for different categories of resources and services.
 - GRSPs in each 7(i), starting with BP-29, will include additional RSS pricing details that are not defined in the PRDM.
- BPA proposes to draft the Support Services and Resource Support Services language **after contract offers and execution** to allow sufficient time to complete this detailed work.
 - This is consistent with BPA's approach for Regional Dialogue.
- BPA will ensure that the POC contract Support Service provisions, including RSS, and the comparable sections in the BP-29 GRSPs work in concert.

RSS Timeline

- Proposed timeline (on next slide) will allow BPA and customer staff to focus on PRDM-26 proceeding, BP-26 Rate Case, and Provider of Choice contract offers and execution.
- BPA will hold public workshops to discuss and negotiate the Support Service and RSS provisions transparently.
- BPA's proposed timeline will ensure Support Service and RSS contract provisions are completed prior to the BP-29 Above-CHWM election on July 31, 2027.
- BP-29 initial Support Service and RSS specific costs will not be proposed until Initial Proposal Rates are issued in November 2027.

RSS Timeline

POC contracts executed

Dec 31, 2025

BP-29 Start of Rate Period

Oct 1, 2028



Support Service Contract Drafting

- Draft #1
- Customer Comments #1
- Draft #2
- Customer Comments #2
- Final Revisions
- Apr 1 ★ Support Service Provisions Published

BP-29 Above CHWM Process

- May 1 ★ Publish Draft Amounts
- Comment Period
- Resolve Comments and Calculate Final Amounts
- Jul 1 ★ Publish Final Amounts
- Jul 31 ★ Customer A-CHWM elections

BP-29 Rate Case

- Pre-workshops
- Support Service Inputs Initial Proposal
- Nov 15 ★ Initial Proposal
- Support Service Inputs Final Proposal
- Jul 15 ★ Final Proposal



Contract Templates

Draft Contract Templates

- December 19 release discussion.
- Feedback on December workshops:
 - Please hold written comments and include in your feedback to the December 19 draft template.

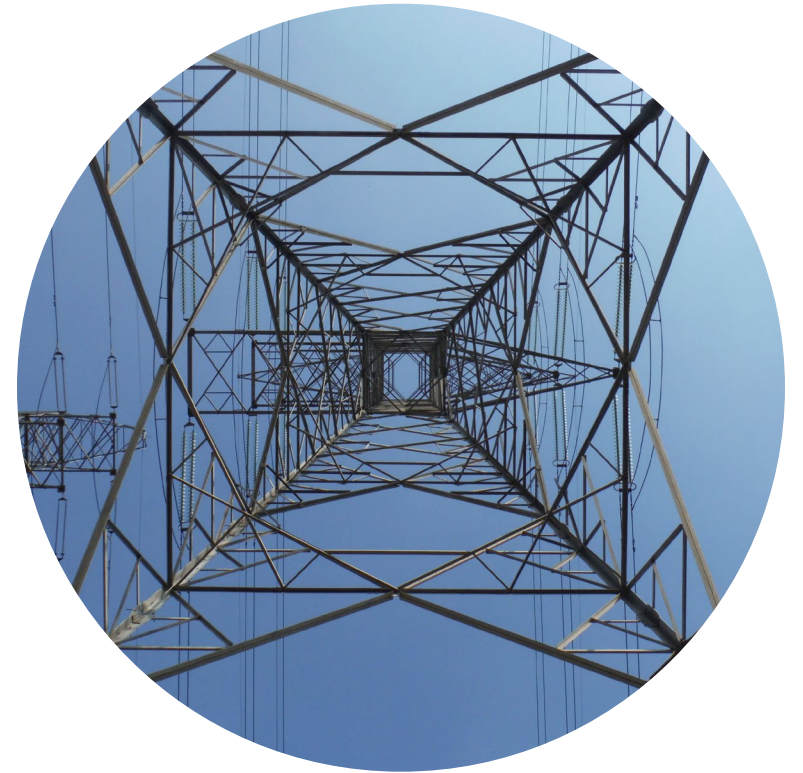


Next Up

Comments

Next workshops:

- Tues. Dec 17, 9am-4pm (Webex)
- Wed. Dec 18, 9am-4pm (Webex)
- Tues. Jan 21, 9am-2pm (hybrid)
- Wed. Jan 22, 9am-2pm (hybrid)
- Thurs. Jan 23, 9am-2pm (hybrid)





Thank you.

Find Us:

Email: post2028@bpa.gov

Web: [Provider of Choice - Bonneville Power Administration \(bpa.gov\)](https://www.bpa.gov)