

Identification & NRHP Evaluation

2012

Updated a 1983 **nomination for the Palus Canyon Archaeological District** containing 96 contributing precontact archaeological sites spanning 2,000 acres, dating to over 11,000 years ago, including a large village site and many rock shelters and images.



2012-2014

Contracted with participating Tribes to develop context and eligibility statements for the Palus Canyon Traditional Cultural Property (TCP).

2015

USACE drafted a determination of **eligibility under all four NRHP Criteria for the Palus Canyon TCP**, and achieved Washington SHPO/DAHP concurrence.

Statement of Integrity: Geological formations found within the Palus Canyon play crucial roles relating to Tribal creation stories relevant for maintaining cultural identity. These stories convey traditional cultural settlement and subsistence practices central to Tribal members who continue to carry out these practices within the TCP. Various landscape formations tie directly to beings, both real and legendary, deemed significant to tribal beliefs. These connections of beings and traditional cultural practices between ancestors and current tribal members span time immemorial to the present and are maintained through TCP access.

Determination of Adverse Effects

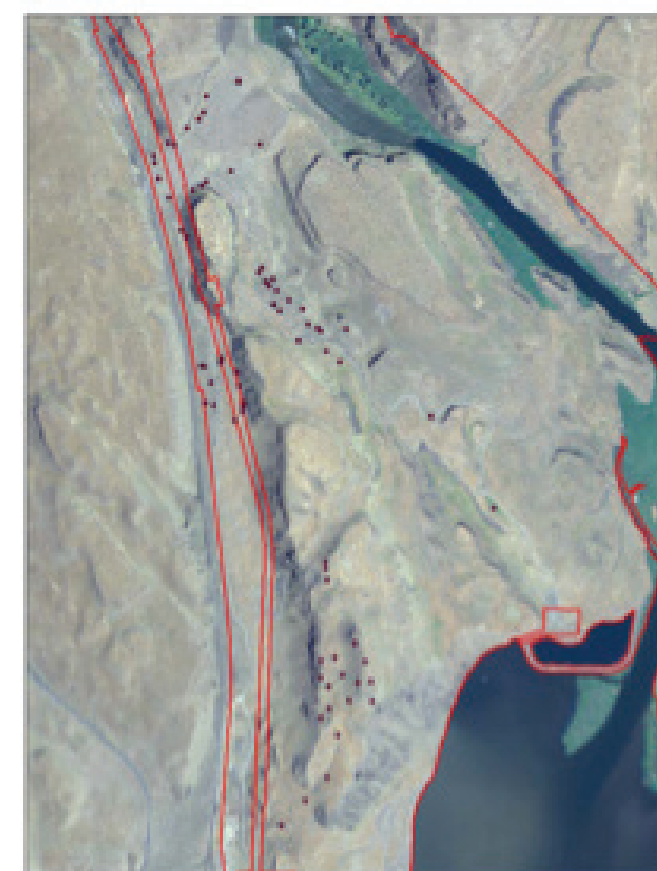
2017

USACE and BPA created determinations:

Direct effects to historic property include inundation, erosion, public access, and development, which limit tribal access and cause loss of site landforms and degradation, displacement, and loss of cultural remains. These processes adversely affect the property's integrity of design, materials, setting, feeling, association, and workmanship.

Indirect effects include those that diminish the atmospheric qualities of the property's traditional cultural significance such as visual impacts from development (Lyons's Ferry Marina, Park, and Habitat Management Unit) and auditory and olfactory changes to the natural environment from river traffic and native species loss. Indirect effects diminish the property's integrity of setting, feeling, and association.

Despite the adverse effects noted above, USACE and BPA determined that, as a whole, **the Palus Canyon TCP retains sufficient integrity to convey its significance** under all four NRHP eligibility criteria.



Treatment for Adverse Effects

2018

Conducted spring site visit. **Met with Tribes individually** to discuss mitigation options.

2019

Contracted with Tribes to develop potential scopes of work for implementation.

2020 CTUIR

Ethnobotanical survey of Lyons Ferry Habitat Management Unit (HMU). Identified, mapped, and assessed impacts to 25 First Foods and culturally important plants used for ceremonial, technological and medicinal use.

CCT

Ethnobotanical survey of Lyons Ferry HMU and John Henley HMU. Identified, mapped, and assessed impacts to 24 traditional cultural plants.

NPT

Multi-step mitigation proposal which included ethnographic research, and resulted in a **90-page report** containing ethnographic perspective and background research and archaeological background research sections, along with an annotated bibliography for archaeological survey and monitoring reports, NAGPRA documentation, and other identified sources.

CTUIR

Assessment of archaeological collections in the Lower Monumental Project for First Foods analysis. Compiled a comprehensive list of plants and animals that have been identified in an archaeological context, including 70 plant species and 124 animal species.

2021 NPT

Multi-step mitigation proposal which included oral interviews with Tribal members during visits to Palus Canyon that were described in a report. Five **placed-based educational activities** were also developed.

NPT

Story Map creation: "ipelúutpe," A Living Landscape.

"Projects such as this one seek to re-affirm these ancient connections to place to younger generations through on-site interactive learning. Being on the landscape while learning helps bolster the continuing interaction with the land and the resources of that land."

-Jonathan Moon

2022-2024 YN

Subcontractor conducting interviews of Tribal staff and elders for **visual content and video**. YN will prepare a technical report on the use of video.

Payos Kuus Cuukwe

People Learning on the Snake River

Realizing benefits of 12 years of sustained focus on the Palus Canyon Traditional Cultural Property

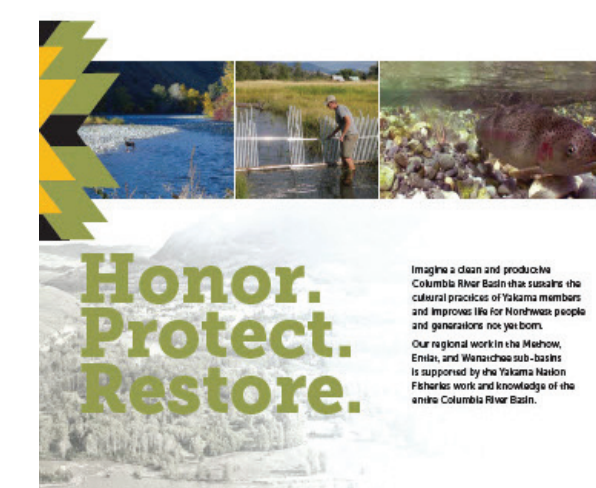
Celia Morét Crockett
Bonneville Power Administration

In cooperation with the Payos Kuus Cuukwe Cooperating Group



Multi-step mitigation proposal for **development of visual content** that could be used to transmit culturally important knowledge to a wider Tribal audience.

YN



CCT

Conversion of 49 'legacy' traditional-use video cassettes to digital format and **elder site visits** to Palus Canyon TCP.



2022-2023 NPT Story Map creation: "ipelúutpe titwáatit," Stories from Above the Falls to the Confluence and Through Centuries.

