

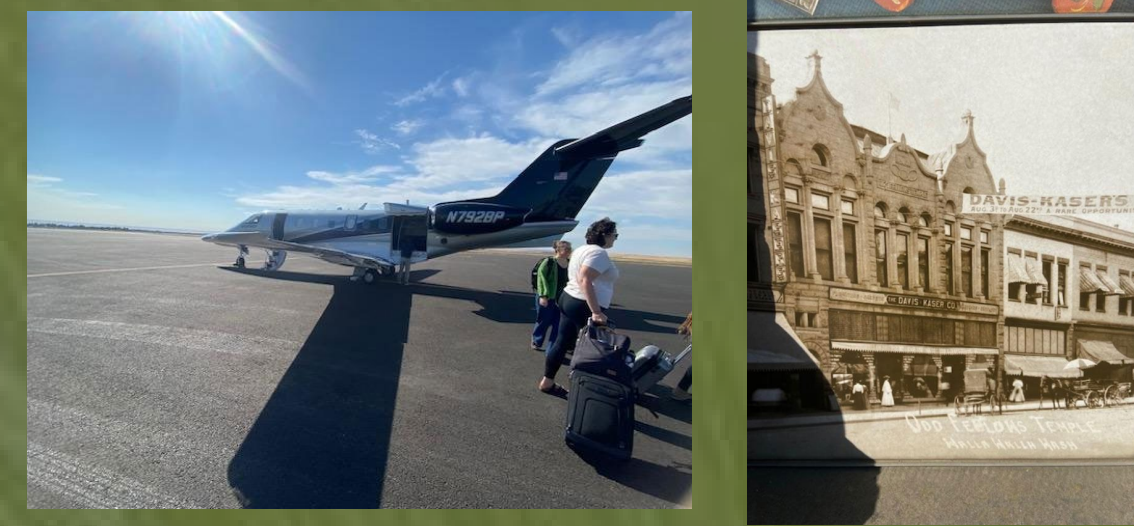
# Federal Columbia River Power System

My name is Dakota Zimmer, I am an enrolled member of The Confederated Tribes of Grand Ronde. Currently I am a senior at Oregon State University majoring in Anthropology with a focus on Archeology.



## Albeni Falls

Hoodoo Creek is very popular for water recreational activities, but since these waterways are areas where old village sites are present, the area was previously stabilized with riprap. However, fish are dying, and they believe it might be from the basalt riprap and the heat in the surrounding water.



## Payos Kuus Cuukwe

Payos Kuus Cuukwe are working on sensitive topics. Treatment plans that have been put in place for some of these area include different bank stabilization projects, They are also seeing over some special monuments that have been targeted for repeated vandalizing, and protection plans are being thought of and put into place.



## Cle Elum Fish hatchery

I had the opportunity to visit Yakama Nations Levi George Supplementation and Research Facility. The project plan that is being implemented states, "The YKFP is now working with subbasin stakeholders to implement a series of complimentary habitat restoration and supplementation/ reintroduction projects targeting all species historically present in the subbasins." The work that is being done to keep up with project plans include monitoring and evaluating passages and survival for fish, releasing an annual amount for natural stock restoration, etc.



## Wana Pa Koot Koot

Wana Pa Koot Koot has been working on different treatment projects, such as Tsagaglala, or "She Who Watches". Graffiti damage is, unfortunately, something that happens to these sites. It is important to bring awareness on how to care for these places and how to protect them. Community cultural walks and interpretation panels have been used for treatment plans.



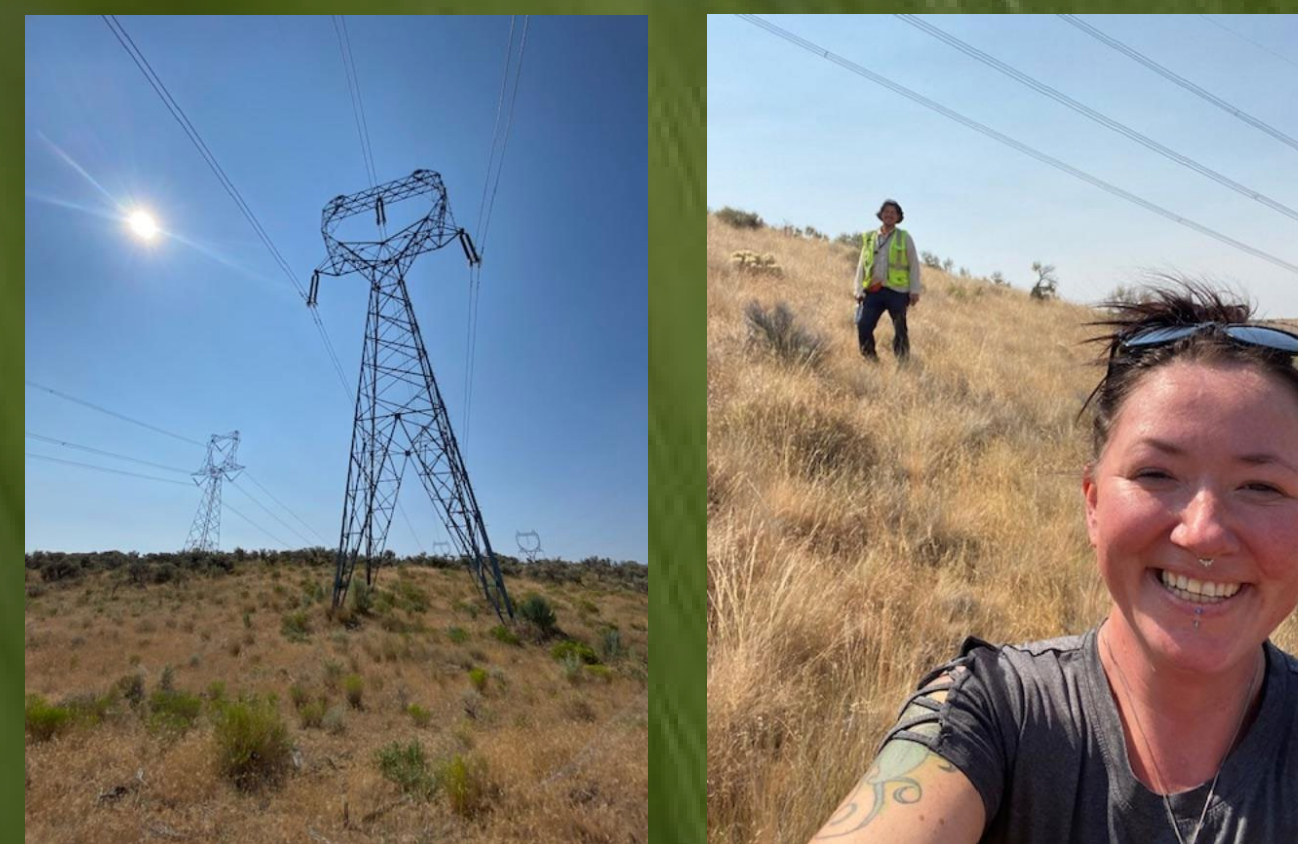
## Spokane Arm-Mainstem

Spokane arm and Mainstem co-operating groups have been working on different projects within areas needing to remain confidential. They have been working with Historic Human Remains Detection dogs to help protect sites. They also have been utilizing LiDAR scanning to recreate important sites virtually. There is an understanding that some elders cannot make it to see some of these areas, and LiDAR recreations would enable elders an opportunity to experience it.



## Ross Complex Inventory

One of the oldest Bonneville Power Administrations sites is being modernized, and old Ampere buildings were demolished. Since the buildings were significant, items were kept from the building and will be later displayed or reused in new buildings. Some of the items were being moved to another storage facility, so I was able to ride along while the historians went over the inventory and checked accession numbers.



## Mitigate Impairments

Impairments, where power lines are too close to other objects, occur along transmission lines. These are identified utilizing LiDAR taken with aerial oblique photographs. GIS maps help identify geological history and the private lands in the area. I spent two days surveying with archeologists from BPA's transmission group on an impairment project.



## Dead Tree Survey

Dead trees can become a hazard when they are too close to power lines. Since the fires that ripped through the Gorge in 2018, there are a lot of dead trees along BPA's transmission lines that need to be removed. The areas in which the projects would be taking place needed to be surveyed. This was a great opportunity for me to observe root exposure and uplifts from fallen trees.

Bonneville Power Administration offers a 10-week internship through AISES (American Indian Science and Engineering Society) for enrolled college students studying anthropology, Archeology, or historic preservation. The 2024 internship was focused in the FCRPS Cultural Resource program, and I traveled with the FCRPS team to numerous cooperating group Meetings. I was also given the opportunity to assist in the field with additional fieldwork in BPA's transmission group as well. Beyond this poster, that summarizes my experience, my time at BPA was an enjoyable one. It was exciting to learn about all the important projects that are being worked on, and how broad archeology can be. Future career goals would include working on projects that involve protecting and preserving cultural resources.