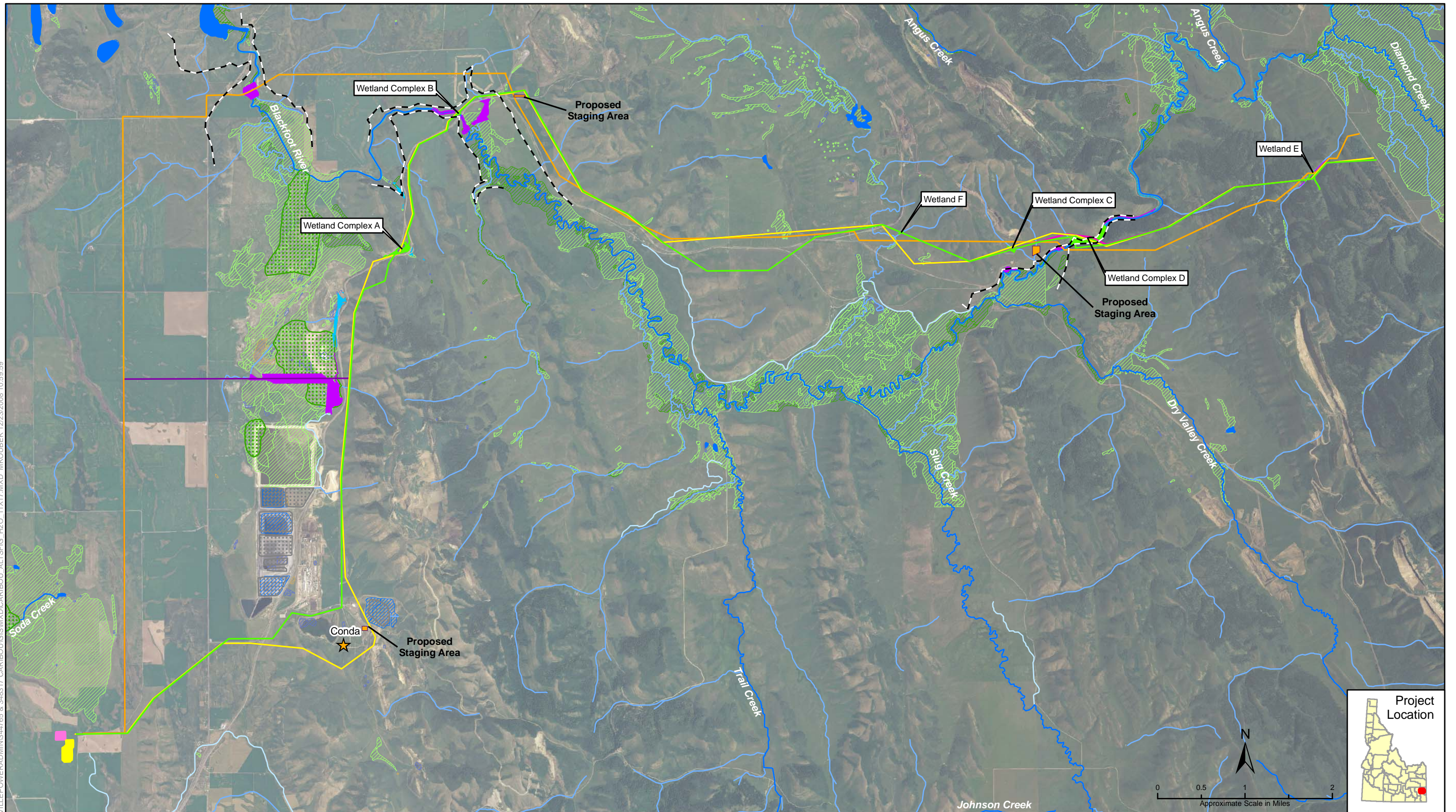


BOI:\NOW\PROJ\BOONNEVILLE\POWERADMIN\344765 & 348317\CARIBOU\GIS\MXD\CARIBOU_ALT\FIG_H2O_11\117.MXD MKOUBEK 12/23/2008 10:59:59



Legend

- | | | | | | | |
|-----------------|--------------------------|-------------------|---|-----------------|--------------------------------|---|
| Proposed Action | Alternative 4 | Waterbody | Wetland Delineation Area (CH2M Hill 2007) USFWS NWI | Lake | Proposed BPA Substation | 100-yr Inundation Boundary (approx)* |
| Alternative 1 | Named Streams and Rivers | Swamp or Marsh | Wetland Delineation Area (JBR 2003) | Other | Proposed Pacificorp Substation | *100-yr inundation boundary based on engineering judgement using contours as reference. |
| Alternative 2 | Un-named Stream | Artificial Basins | Potential Wetland Area, Outside Area of Investigation | Riverine | Proposed Staging Area | |
| Alternative 3 | Canal / Ditch | | Freshwater Emergent Wetland | Freshwater Pond | | |
| | | | Freshwater Forested/Shrub Wetland | | | |

Source: USFWS NWI; Hydrography USGS and EPA; Field Verified Wetlands, CH2M Hill 2007 survey.



Hooper Springs-Lower Valley Transmission Line

Figure 11
Water Resources