



# Fact Sheet

July 2011

## Big Eddy-Knight Transmission Project Update Final environmental impact statement now available

BPA proposes to construct a 500-kilovolt lattice steel tower transmission line from our existing Big Eddy Substation in The Dalles, Ore., to a proposed new Knight Substation about four miles northwest of Goldendale, Wash. The project would increase transfer capability of the BPA transmission system so we can respond to requests for transmission service in the region.

We have completed a final environmental impact statement. It describes the proposed project and its potential environmental effects, and it responds to comments BPA received on the draft EIS. Though we have not made a final decision, the East Alternative remains our preferred alternative for this project with minor adjustments (see map on page 3).

Next, BPA will produce a Record of Decision that will document BPA's decision about whether to proceed with the project and, if so, which alternative has been selected. We plan to issue the ROD late this summer.

### Final EIS

The final EIS is a comprehensive, three-volume document that explains the need for BPA to take action, describes the alternatives considered and their potential environmental impacts and lists mitigation measures to lessen or eliminate those impacts. The final EIS also describes project revisions and addresses comments received on the draft EIS.

The comments we received covered a range of topics including the need for the project, alternatives considered and potential impacts to specific resources. These resources include farmland and other land uses, recreation, geology, vegetation, special-status species and habitats and county roads. Commenters also expressed concerns about property values, electric and magnetic field exposure and views within and outside of the Columbia River Gorge

National Scenic Area. Copies of all comments and BPA's responses are included in the final EIS, as well as additional environmental analyses and mitigation measures developed in response to comments.

Project revisions addressed in the EIS include enlargement of Knight Substation, electrical service needs at Knight Substation, ground wire requirements on an existing line, expansion of BPA's Wautoma Substation and road updates.

The final EIS is available online at [www.bpa.gov/go/BEK](http://www.bpa.gov/go/BEK).

### Project description

The proposed project is needed to increase the transfer capability of the BPA transmission system so we can respond to requests for transmission service in the region. The project includes a new transmission line, substation facilities and a fiber optic cable (see map on page 3). BPA has proposed three transmission line routes: the West Alternative, Middle Alternative and East Alternative, as well as an option to not build the line (the No Action Alternative).

All transmission line routes would begin at BPA's existing Big Eddy Substation. Additional equipment would be installed within the fenced substation yard. All route alternatives would be approximately 28 miles long and would use some existing BPA transmission line right-of-way and some new 150-foot wide right-of-way. Each alternative would cross the Columbia River and the Columbia River Gorge National Scenic Area and would end at one of two proposed Knight Substation sites.

Where the proposed alternatives would parallel existing lines, there are options to either build the proposed line next to existing lines using single-circuit towers or remove existing lines and build double-circuit towers that could carry both lines.



Two sites are considered for Knight Substation, which would be a fenced, 22-acre facility. The sites are next to each other along BPA's existing Wautoma-Ostrander transmission line (see map on page 3).

There are two options for a fiber optic cable that would be required for electrical system communications. A Loop Back Option would string fiber optic cable on the proposed transmission line towers from Big Eddy Substation to Knight Substation and then loop back to Big Eddy Substation on the same towers. A Wautoma Option would follow the same route to Knight Substation but then continue an additional 72 miles on an existing BPA line through Yakima County, Wash., to BPA's Wautoma Substation in northwest Benton County (see map on last page).

Under any of the construction alternatives for the Big-Eddy Knight Project, BPA's Wautoma Substation would be expanded by about 0.5 acre on BPA property to contain equipment that would support and enhance the electrical system.

## BPA's Preferred Alternative

BPA's Preferred Alternative has not changed. The East Alternative, along with a minor route adjustment at line mile 7, is BPA's Preferred Alternative (see map on page 3). The Preferred Alternative also includes: 1) removal of an existing line and rebuilding both the existing and proposed lines on double-circuit towers for the first 14 miles, 2) Knight Substation Site 1 and 3) the Wautoma Option for the fiber optic cable. Although these project components are preferred, we have not made a final decision.

## Public comment helped refine BPA's proposal

Last December, we released the draft EIS and asked for your comments. We also held two public meetings, one Jan. 11, 2011, in The Dalles, Ore., and another Jan. 12, 2011, in Goldendale, Wash. About 370 people commented on the draft EIS, which helped BPA make adjustments to the project and refine the environmental analysis and mitigation measures.

## Next steps

With the final EIS completed, BPA will prepare a Record of Decision that documents whether BPA has decided to proceed with the proposed project and, if so, which alternative has been selected. BPA expects to issue its ROD in late summer 2011. If BPA decides to build the project, substation and transmission line construction

could begin in fall 2011 after all necessary permits and approvals have been obtained. If this occurs, BPA expects that construction would be complete in 2013.

## Copies available

If you would like to receive a copy or additional copies of the final EIS on paper or compact disc, please call our toll-free document request line at 800-622-4520. If you receive the final EIS, you will also receive the ROD when it is completed unless you request otherwise. Please leave a message with your request, the project name and your complete mailing address.

You may also contact us via mail at Bonneville Power Administration, Public Affairs Office – DKE-7, P.O. Box 14428, Portland, OR, 97293-4428. You can fax us at 503-230-4019 or call our toll-free public involvement line at 800-622-4519.

## Additional contact information

**Stacy Mason**, Environmental Coordinator, Bonneville Power Administration – KEC-4, P.O. Box 3621, Portland, OR 97208-3621; toll-free telephone 800-282-3713; direct telephone 503-230-5455; or e-mail [slmason@bpa.gov](mailto:slmason@bpa.gov).

**Emmanuel Jaramillo**, Project Manager, Bonneville Power Administration – TEP-TPP-1, P.O. Box 61409, Vancouver, WA 98666-1409; toll-free telephone 800-282-3713; direct telephone 360-619-6116; or e-mail [ejaramillo@bpa.gov](mailto:ejaramillo@bpa.gov).

**Shelley Fenton**, Realty Specialist, Bonneville Power Administration – TERR-3, P.O. Box 3621, Portland, OR, 97208-3621; toll-free telephone 800-282-3713; direct telephone 503-230-4797; or e-mail [snfenton@bpa.gov](mailto:snfenton@bpa.gov).

## Environmental Impact Statement Schedule

### July 2011

BPA issues final EIS.

### September 2011

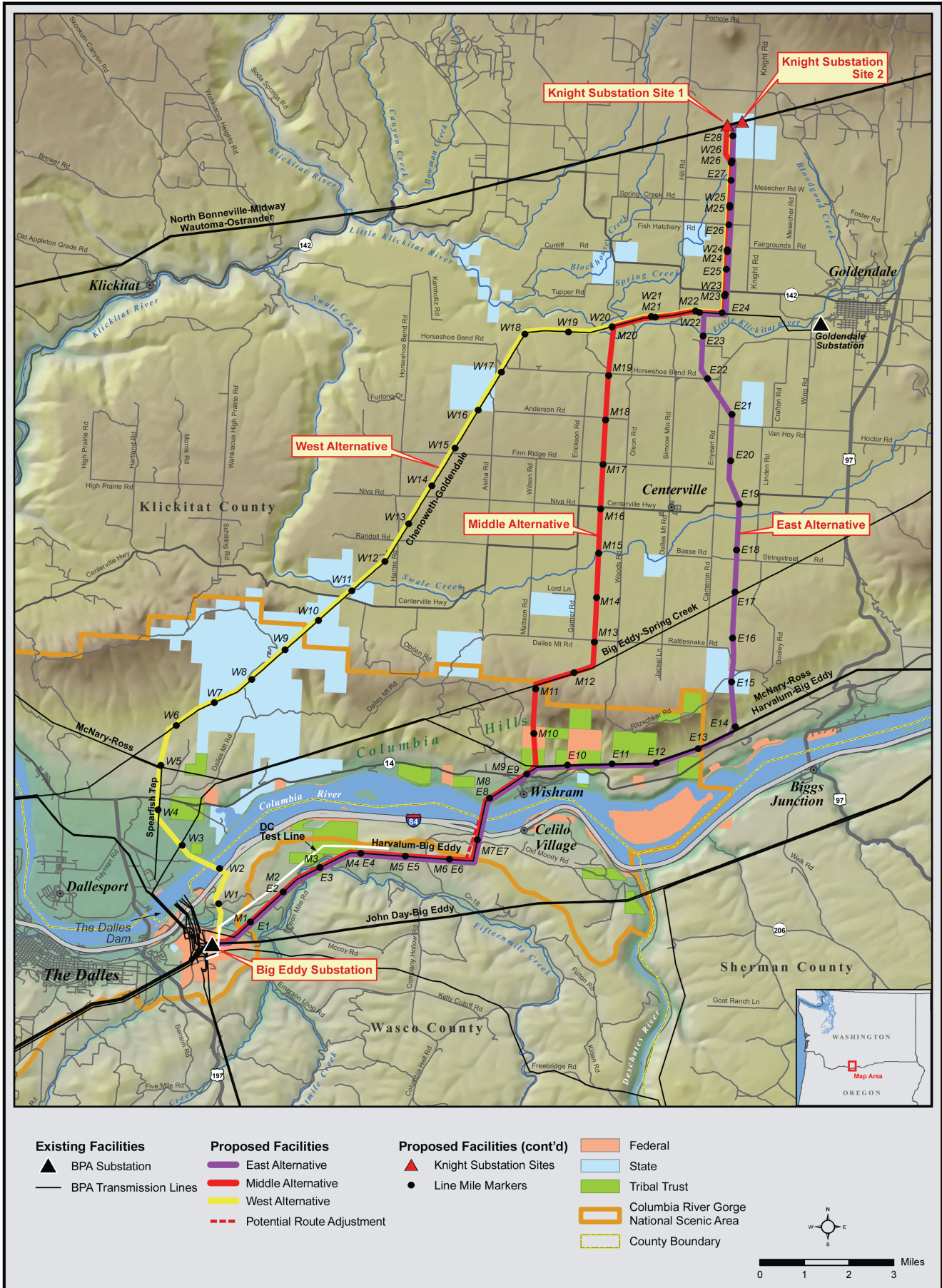
BPA issues Record of Decision announcing agency decision.

### Fall 2011

If BPA decides to build the project, then substation and transmission line construction activities could begin.

# Big-Eddy Knight Transmission Project Overview of Proposed Alternatives

## Wasco County, Ore., and Klickitat County, Wash.



# Big Eddy-Knight Fiber Optic Cable and Wautoma Substation

Wasco County, Ore., and Klickitat County, Wash.

