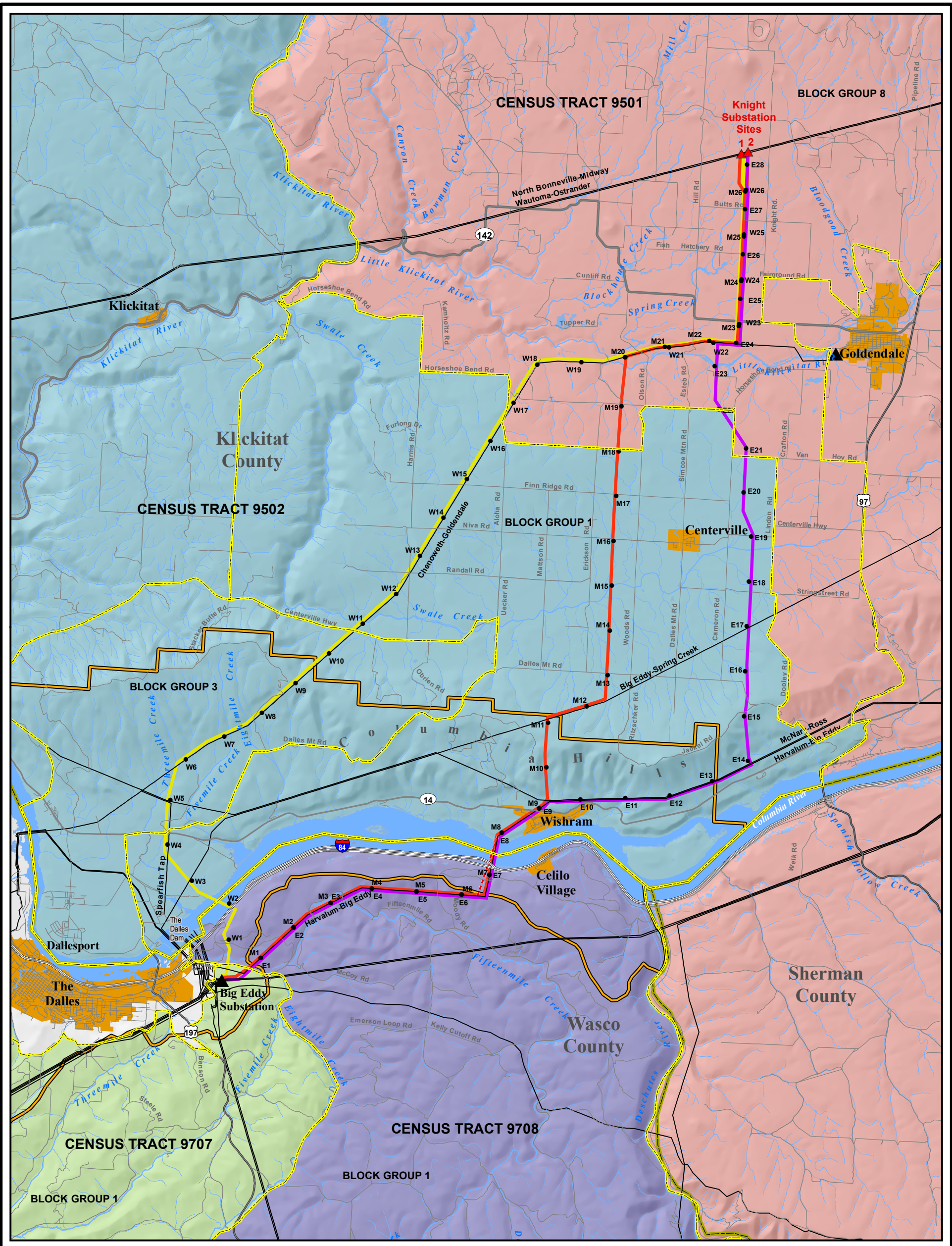


Appendix K
Environmental Justice

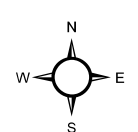


Existing Facilities
 ▲ BPA Substation
 — BPA Transmission Lines

Proposed Facilities
 — West Alternative
 — Middle Alternative
 — East Alternative
 - - - Potential Route Adjustment
 ▲ Knight Substation Sites
 ● Line Mile Markers
 □ County Boundary
 □ Columbia River Gorge National Scenic Area
 ■ Urban Areas

Block Group
 □ Block Group 1
 □ Block Group 3
 □ Block Group 8

Census Tract
 ■ 9501
 ■ 9502
 ■ 9707
 ■ 9708



Map K-1. Census Tracts and Block Groups

Table M1. Minority Populations in the Study Area

		Total Population	Minority Persons (%)	Black or African American Alone (%)	American Indian and Alaska Native Alone (%)	Asian Alone (%)	Native Hawaiian or Other Pacific Islander (%)	Hispanic (%)
Klickitat County		19,161	896 (4.7)	51 (0.3)	665 (3.5)	139 (0.7)	41 (0.2)	1,496 (7.8)
Washington State		5,894,121	630,456 (10.7)	190,267 (3.2)	93,901 (1.6)	322,335 (5.5)	23,953 (0.4)	441,509 (7.5)
Wasco County		23,791	1,284 (5.4)	71 (0.3)	903 (3.8)	191 (0.8)	119 (0.5)	2,214 (9.3)
Oregon State		3,421,399	210,199 (6.2)	55,662 (1.6)	45,211 (1.3)	101,350 (3.0)	7,976 (0.2)	275,314 (8.0)
Study Area ¹		42,952	2,180 (5.1)	122 (0.3)	1,568 (3.7)	330 (0.8)	160 (0.4)	3,710 (8.6)
Census Tract 9501	Block Group 8	1,480	52 (3.5)	2 (0.1)	45 (3.0)	5 (0.3)	0 (0.0)	44 (3.0)
Census Tract 9502	Block Group 1	898	92 (10.2)	2 (0.2)	85 (9.5)	5 (0.6)	0 (0.0)	34 (3.8)
	Block Group 3	1,350	71 (5.3)	3 (0.2)	43 (3.2)	25 (1.9)	0 (0.0)	64 (4.7)
Census Tract 9707	Block Group 1	731	8 (1.1)	0 (0.0)	2 (0.3)	6 (0.8)	0 (0.0)	113 (15.5)
Census Tract 9708	Block Group 1	1,322	48 (3.6)	2 (0.2)	46 (3.5)	0 (0.0)	0 (0.0)	23 (1.7)

¹ Study Area is comprised of Klickitat and Wasco Counties